

AMERICAN LIFESTYLE

HOME SERIES



Connecticut**ModularHomes**.com



CONTENTS

RANCH

Gordon..... 3

Mercer 5

Shiloh.....7

Hayward 9

Murray.....11

CAPE

Barclay..... 13

Magnolia..... 15

Carlisle..... 17

Winchester.....19

Branson..... 21

Sullivan.....23

TWO-STORY

Guthrie..... 25

Charlotte..... 27

Bellmeade.....29

Manchester..... 31

CLASSIC AMERICAN HOMES BUILT FOR TODAY'S LIFESTYLES.

Welcome to our collection of American Lifestyle Home Designs. From architectural details to open floor plans, you'll love these classic designs with a modern flair. But remember that these plans are just the beginning. As the nation's largest custom modular-home manufacturer, we offer hundreds of custom options and upgrades for maximum flexibility and style. Make our house your home by choosing everything from the layout and design to countertops and faucets from a variety of well-known national brands. We work with you to design the home of your dreams.

PLAN: GORDON

SERIES: AMERICAN LIFESTYLE

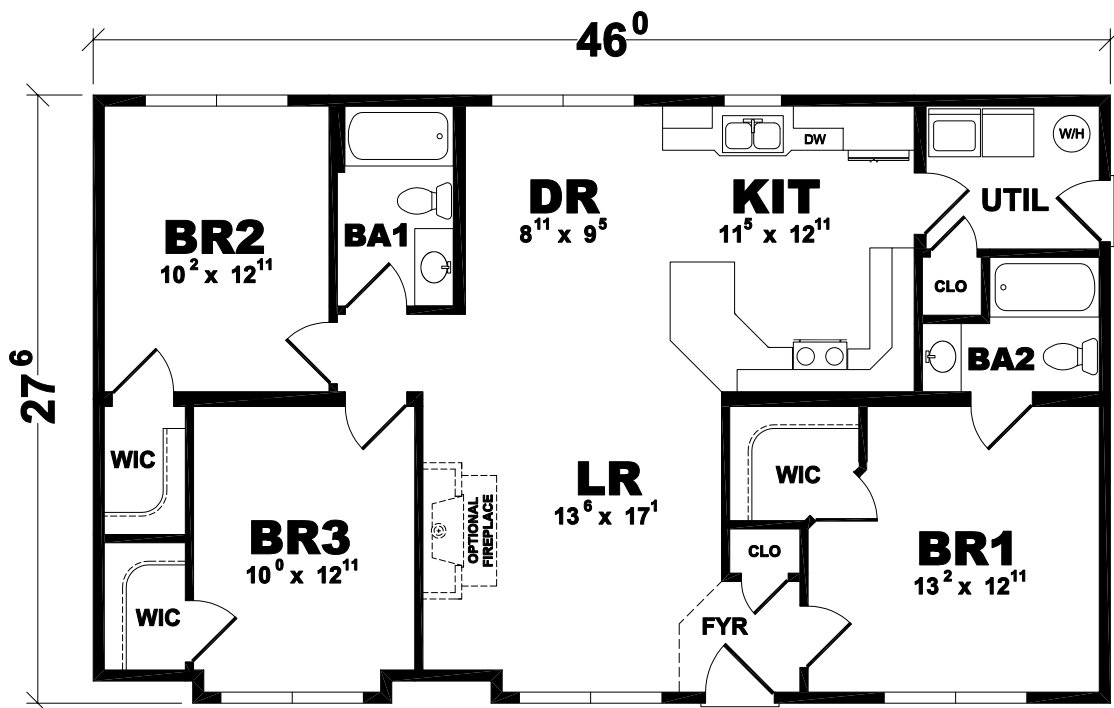


A SINGULAR STORY OF TIMELESS STYLE

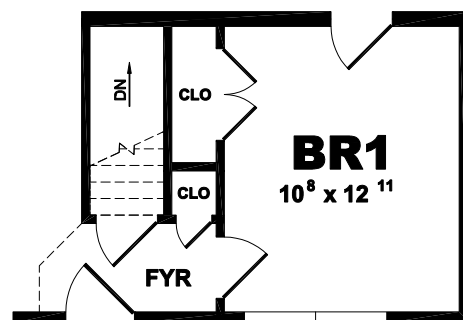
With classic architectural detailing and ample living space, the Gordon home combines modern efficiency with timeless style. The inviting foyer opens into a spacious living room flanked by two of the Gordon's three bedrooms, each featuring a generous walk-in closet. With optional fireplace and open dining room, this design is a one-story dream home come true.

1st Floor = 1,256

Total = 1,256 S.F.



First Floor Layout



PLAN: MERCER

SERIES: AMERICAN LIFESTYLE



EFFICIENCY AND FLOW ARE BUILT RIGHT IN

The stately columns and entry archway of the Mercer lead the way into a well-considered design of efficiency and flow. This three-bedroom, two-bathroom layout puts closet space and storage right where you need them – plus, it offers well-integrated kitchen, dining room and living room spaces for comfortable convenience and effortless entertaining. Add an optional attached garage and enjoy the full Mercer experience.

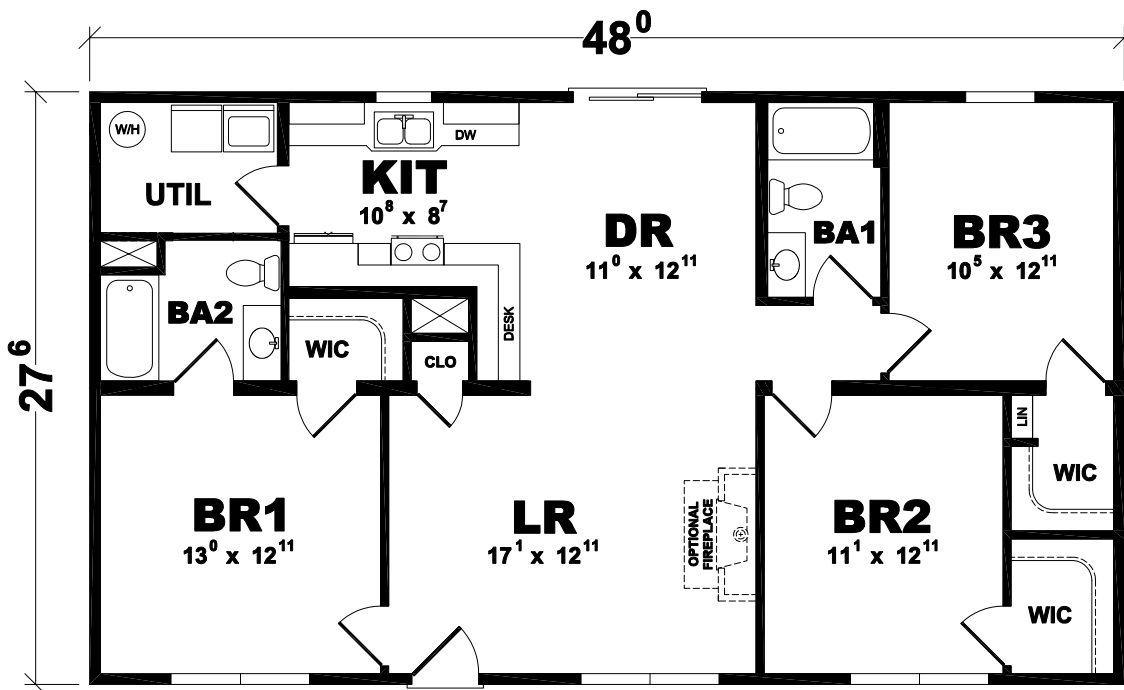


ConnecticutModularHome.com

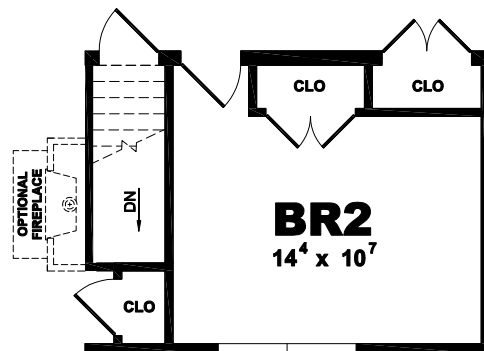
370 Hope Street, Box 2302, Stamford, CT 06906 USA ☎ 203.677.1187 ✉ CTModular@gmail.com

1st Floor = 1,320

Total = 1,320 S.F.



First Floor Layout



Basement Stair Option

PLAN: SHILOH

SERIES: AMERICAN LIFESTYLE



SMART OPTIONS FOR SMARTER LIVING

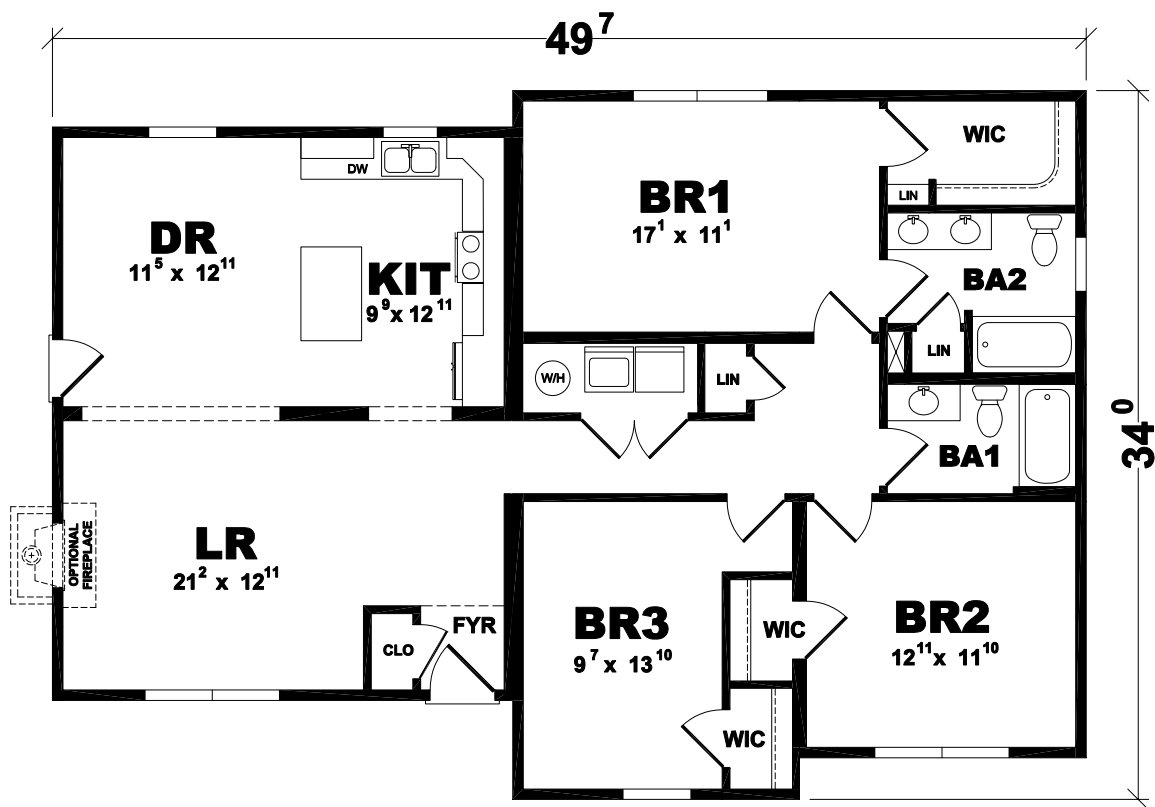
With options including front porch and decorative dormer accents, the possibilities of the Shiloh home go on and on. Use your imagination and utilize this three-bedroom, two-bath home to suit your lifestyle. Thoughtful design touches including an ample kitchen island bordering the dining room and well-placed windows for sunlight and views make the Shiloh a smart home option for anyone.

ConnecticutModularHome.com

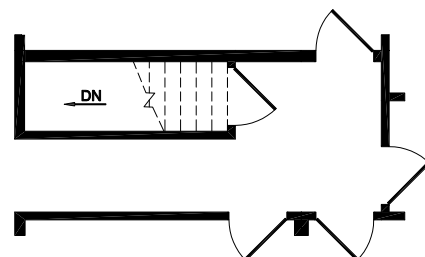
370 Hope Street, Box 2302, Stamford, CT 06906 USA C:203.677.1187 E: CTModular@gmail.com

1st Floor = 1,515

Total = 1,515 S.F.



First Floor Layout



Basement Stair Option

PLAN: HAYWARD

SERIES: AMERICAN LIFESTYLE



SOMETHING
FOR EVERYONE
BUT ESPECIALLY
FOR YOU

For entertaining or just relaxing, the Hayward has the layout you've been looking for. Host dinner guests in the dining room, or enjoy casual family breakfasts at the built-in bartop seating between the kitchen and the living room. The three bedrooms are complemented by two baths, each with matching his/hers sinks. But you'll want to keep the spacious master bathroom all to yourself.

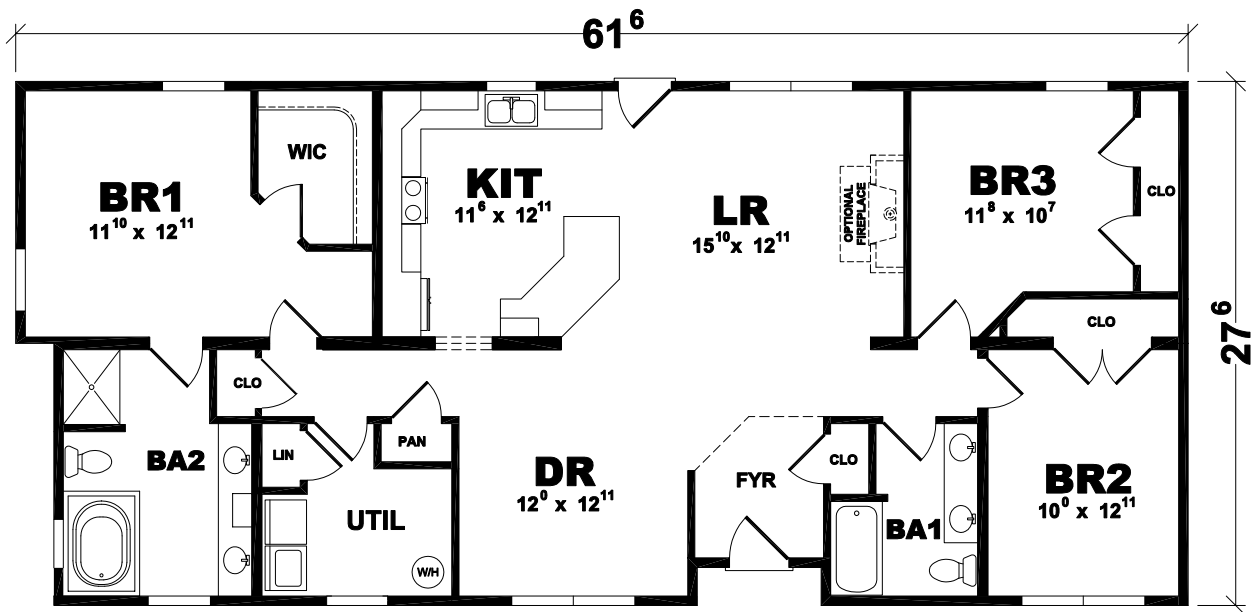


ConnecticutModularHome.com

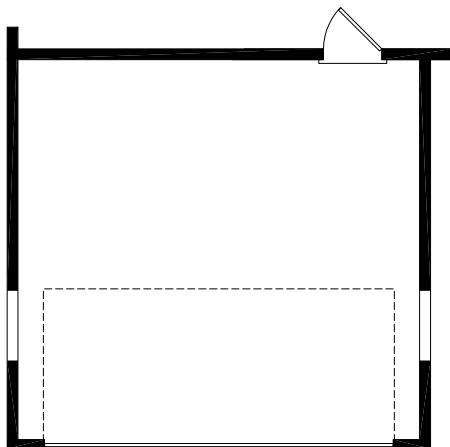
370 Hope Street, Box 2302, Stamford, CT 06906 USA C 203.677.1187 E: CTModular@gmail.com

1st Floor = 1,644

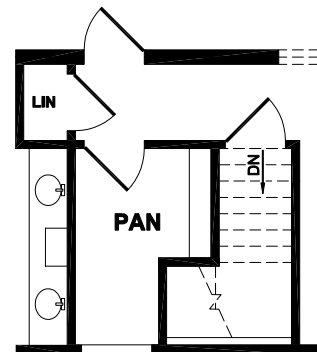
Total = 1,644 S.F.



First Floor Layout



Garage Option



Basement Stair Option

PLAN: MURRAY

SERIES: AMERICAN LIFESTYLE



OPEN SPACES AND COZY FEEL, BUILT RIGHT IN

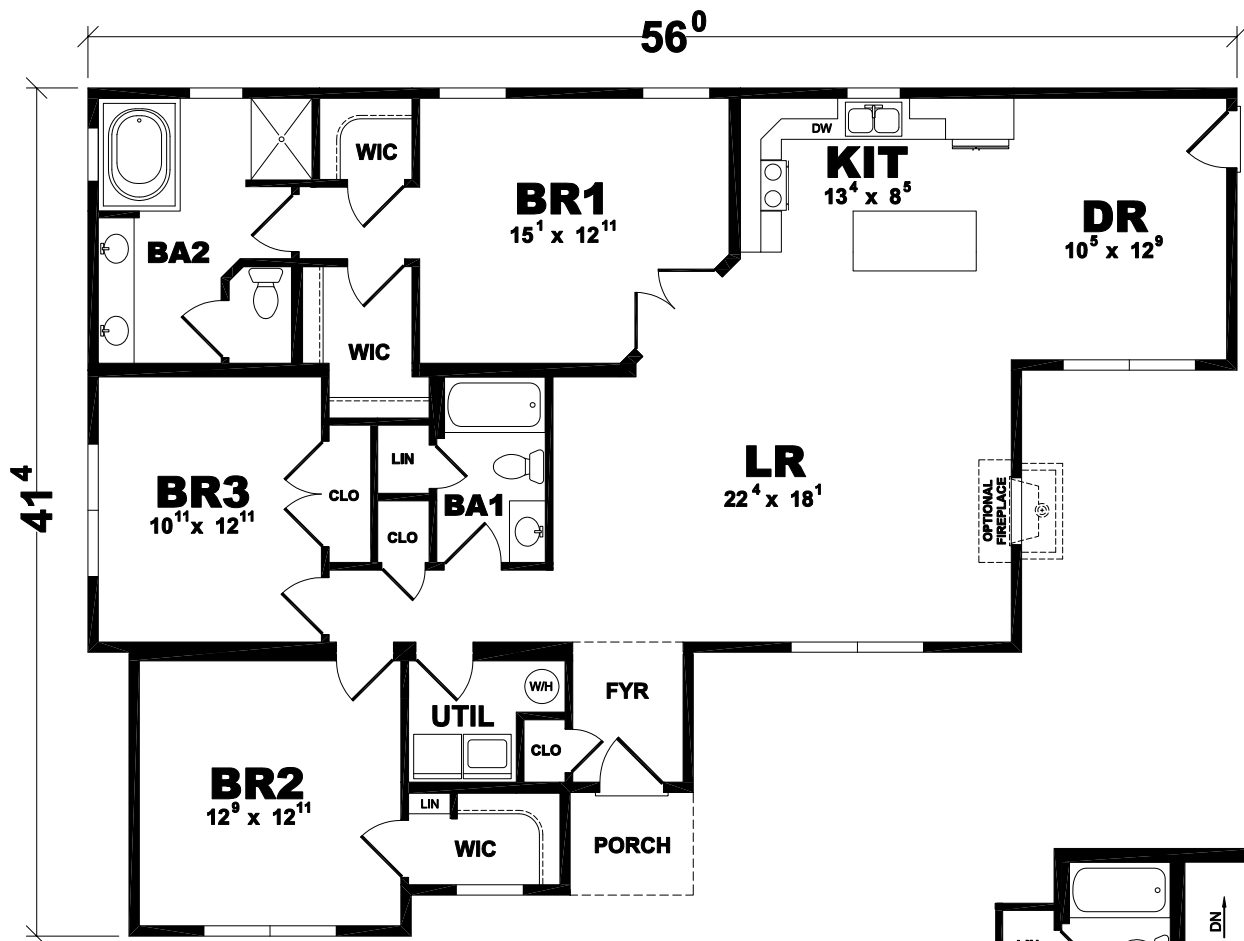
From the inviting front porch that leads into the foyer to the ample master bedroom/bathroom suite, everything about the Murray says, "Welcome home." An open layout offers unobstructed lines of sight from kitchen to dining room to living room, resulting in a wonderfully spacious feel ... while the well-placed three bedrooms and two baths – plus optional fireplace – give the Murray the coziness that makes a house a home.

ConnecticutModularHome.com

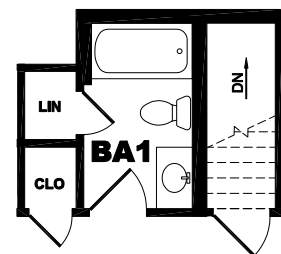
370 Hope Street, Box 2302, Stamford, CT 06906 USA C:203.677.1187 E: CTModular@gmail.com

1st Floor = 1,719

Total = 1,719 S.F.



First Floor Layout



Basement Stair Option

PLAN: BARCLAY

SERIES: AMERICAN LIFESTYLE



WELL-DESIGNED + WELL-BUILT = JUST RIGHT

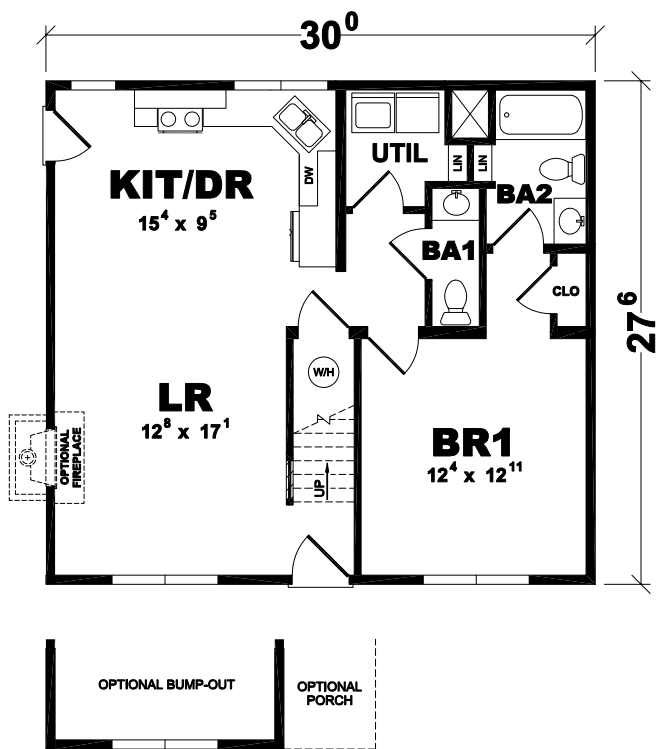
Two words capture the Barclay design: just right. Its three bedrooms and three baths are situated for maximum convenience and efficiency, providing ample living space coupled with beautiful simplicity. Porch, fireplace and bump-out options give you the flexibility to customize the Barclay into the “just right” home you’ve always imagined.

ConnecticutModularHome.com

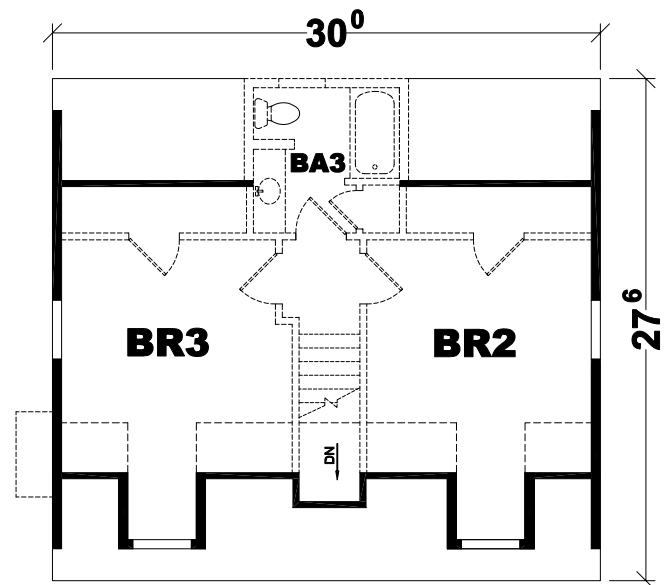
370 Hope Street, Box 2302, Stamford, CT 06906 USA C:203.677.1187 E: CTModular@gmail.com

1st Floor = 825
 Proposed 2nd Floor = 490

 Proposed Total = 1,315 S.F.



First Floor Layout



Proposed Second Floor Layout

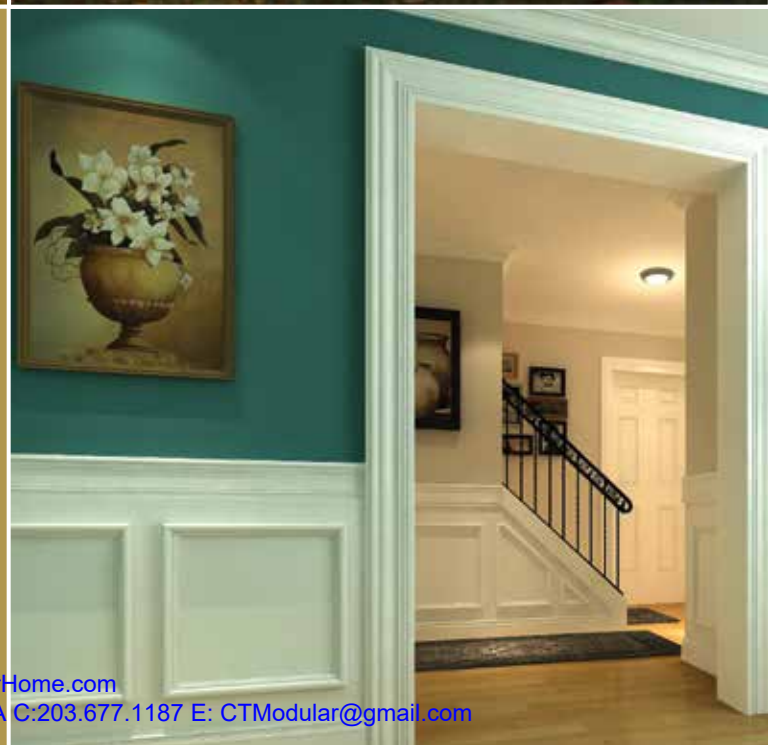
PLAN: MAGNOLIA

SERIES: AMERICAN LIFESTYLE



A PERFECT REFLECTION OF YOU

Looking forward to enjoying memorable meals in your sunlit dining room? Entertaining friends and family by the fire in your living room? Taking in the fresh air on your wraparound porch? The Magnolia provides the design for any or all of the above. Surprisingly versatile in its stylistic potential, the Magnolia can reflect southern charm or colonial classic influence – but with generous options including dormers, porch and garage, you can be sure it will reflect your taste.

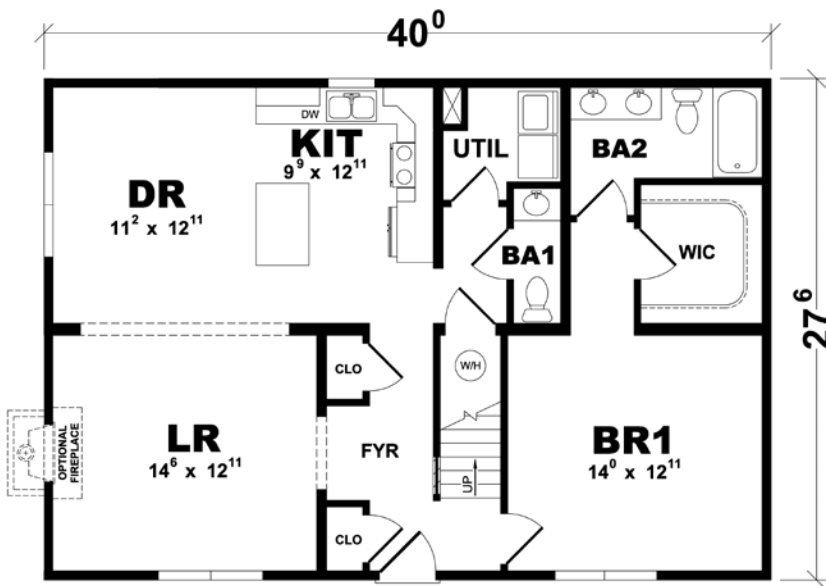


ConnecticutModularHome.com

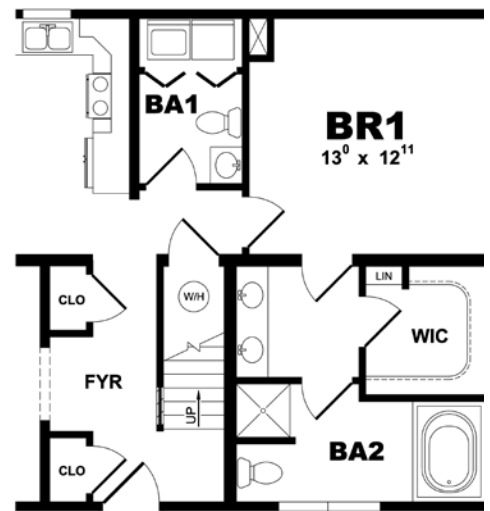
370 Hope Street, Box 2302, Stamford, CT 06906 USA C:203.677.1187 E: CTModular@gmail.com

1st Floor = 1,100
 Proposed 2nd Floor = 653

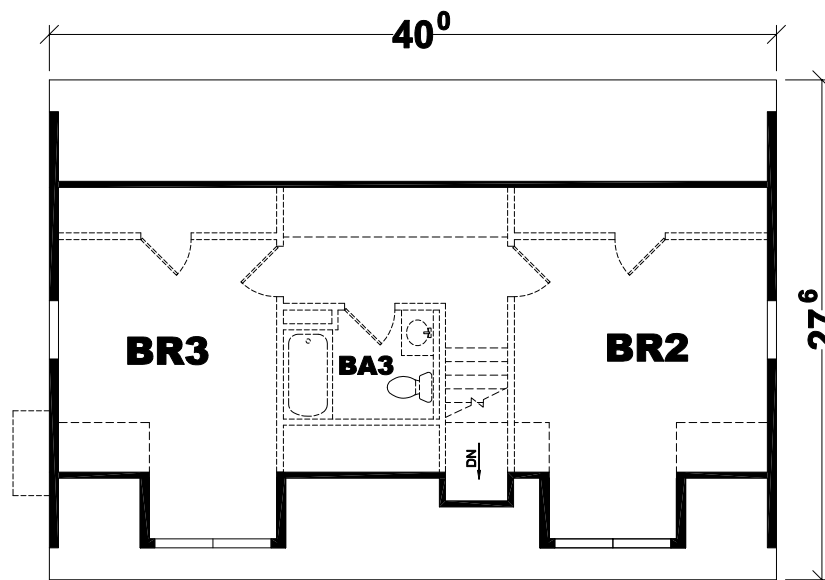
 Proposed Total = 1,753 S.F.



First Floor Layout



Optional Master Suite Layout



Proposed Second Floor Layout

PLAN: CARLISLE

SERIES: AMERICAN LIFESTYLE



A BRIGHT IDEA, FOUNDED ON FLEXIBILITY

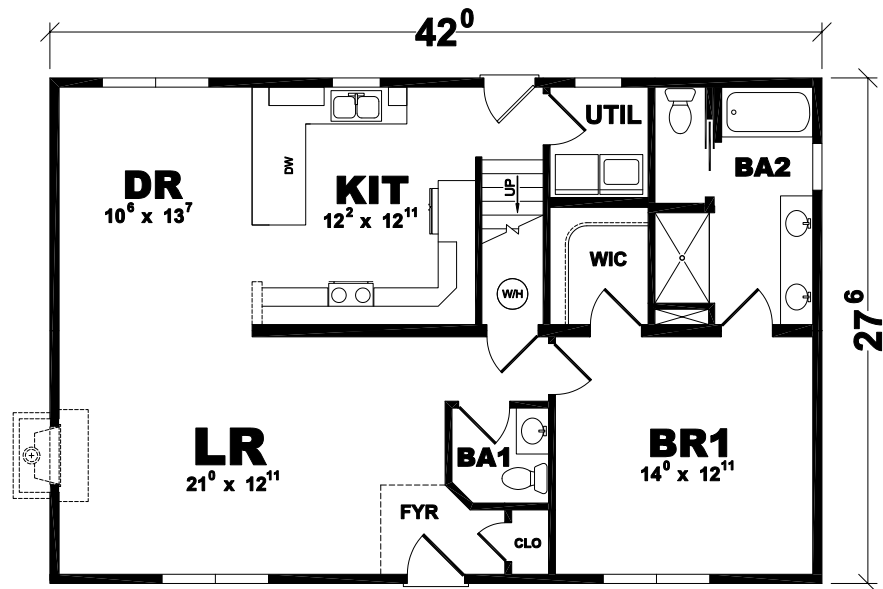
Flexibility is the foundation of the Carlisle model. For some, that means a home with room to grow. For others, it's the many uses afforded by sunlit second-floor sitting rooms. And everyone can appreciate the variety of rooflines and other design choices the Carlisle provides. Whatever you decide, you'll feel right at home in the spacious living room, roomy kitchen, and breezy master bedroom suite.

ConnecticutModularHome.com

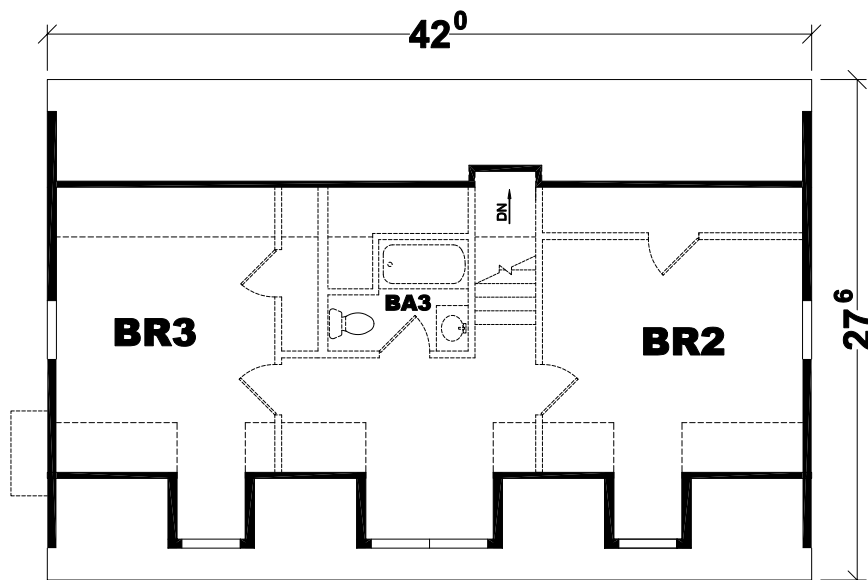
370 Hope Street, Box 2302, Stamford, CT 06906 USA C:203.677.1187 E: CTModular@gmail.com

1st Floor = 1,155
 Proposed 2nd Floor = 686

 Proposed Total = 1,841 S.F.



First Floor Layout



Proposed Second Floor Layout

PLAN: WINCHESTER

SERIES: AMERICAN LIFESTYLE



LOOK FORWARD TO COMING HOME

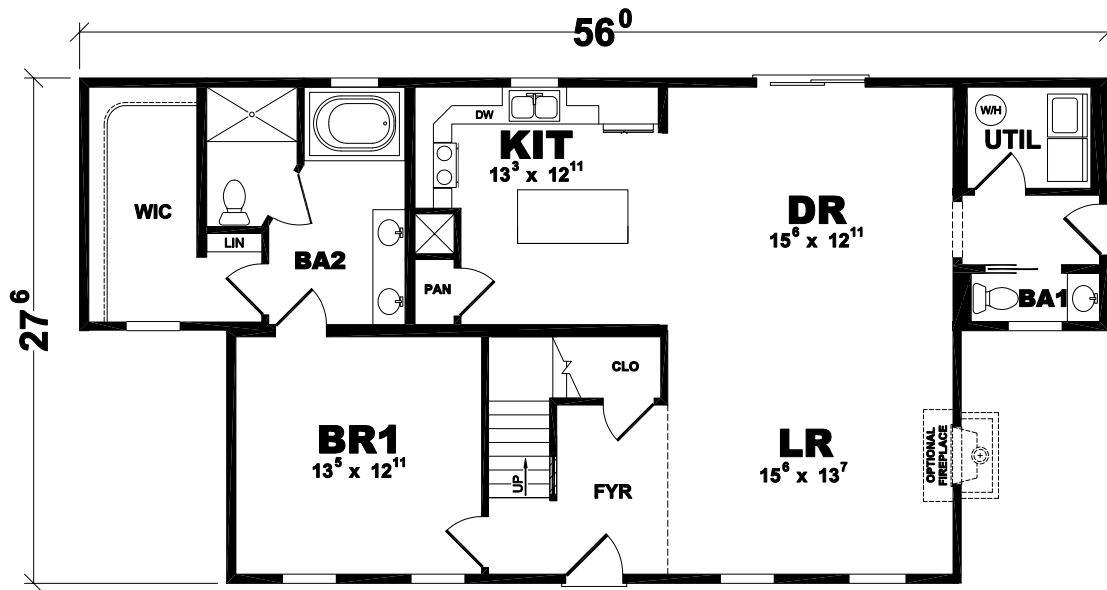
No matter how you look at it, the Winchester provides a room with a view. Look out the living room windows for a glimpse of your welcoming front porch. Look up the main stairway to the spacious second floor – complete with two bedrooms (each with walk-in closet), upstairs bathroom and charming dormers with views of their own. And don't forget to look out the doors of the dining room to your backyard (or patio, or deck ... that's up to you). Design the Winchester that's your picture of perfection. You'll always look forward to coming home.

ConnecticutModularHome.com

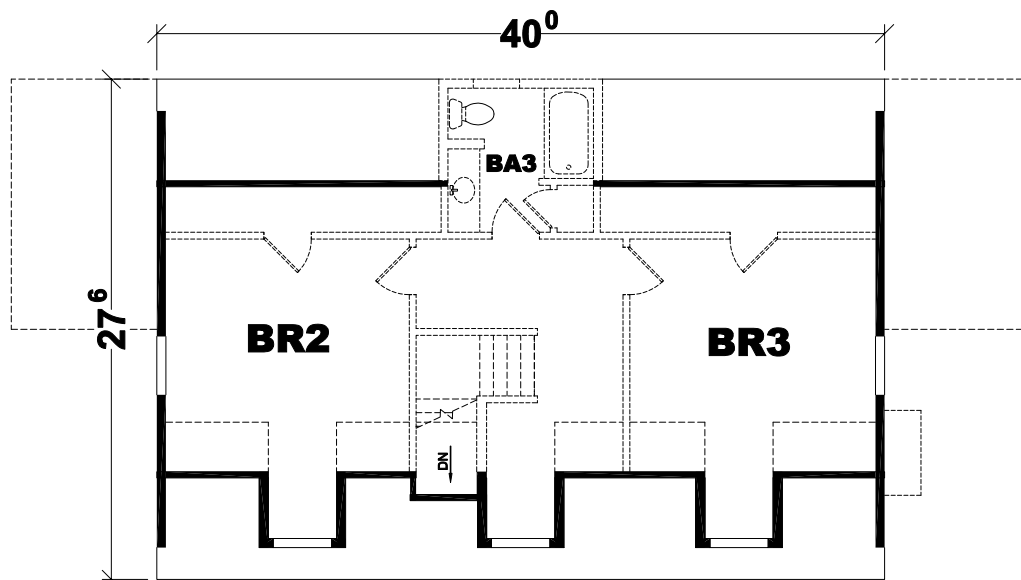
370 Hope Street, Box 2302, Stamford, CT 06906 USA C:203.677.1187 E: CTModular@gmail.com

1st Floor = 1,320
 Proposed 2nd Floor = 653

 Proposed Total = 1,973 S.F.



First Floor Layout



Proposed Second Floor Layout

PLAN: BRANSON

SERIES: AMERICAN LIFESTYLE



PUT IT ALL INTO PERSPECTIVE

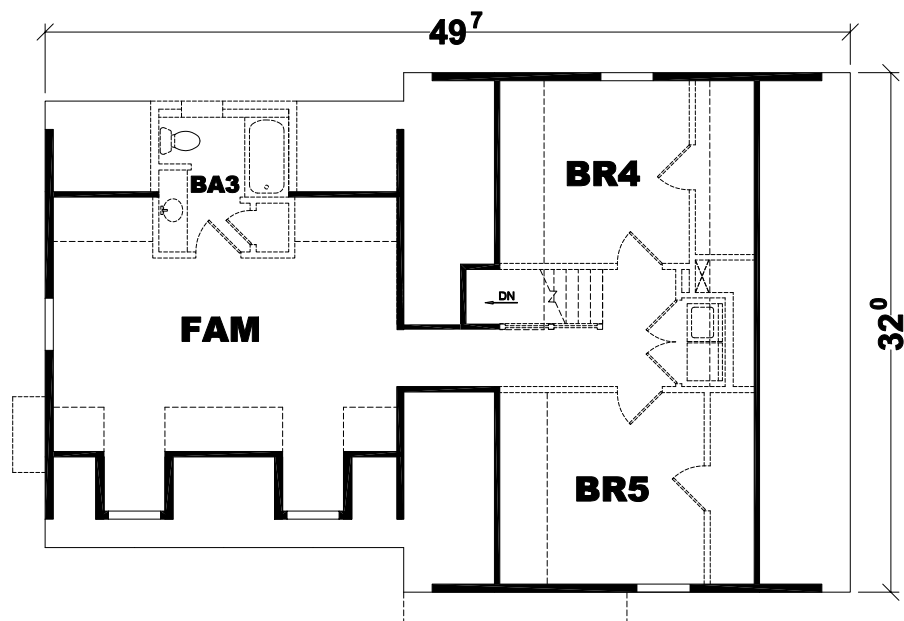
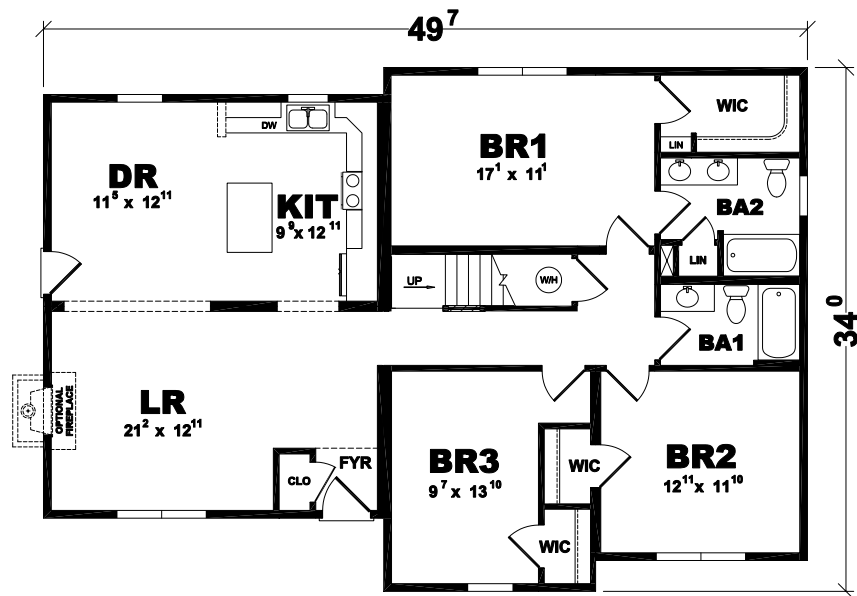
Take living to the next level with the Branson two-story design. Custom options give you the flexibility to make this design the picture-perfect home. And whether you opt for a front porch, double dormers or a cozy fireplace, you'll appreciate the added living space and views the second floor provides.

ConnecticutModularHome.com

370 Hope Street, Box 2302, Stamford, CT 06906 USA C:203.677.1187 E: CTModular@gmail.com

1st Floor = 1,515
 Proposed 2nd Floor = 906

 Proposed Total = 2,421 S.F.



PLAN: SULLIVAN

SERIES: AMERICAN LIFESTYLE



ROOM TO MOVE, TO LIVE, TO RELAX



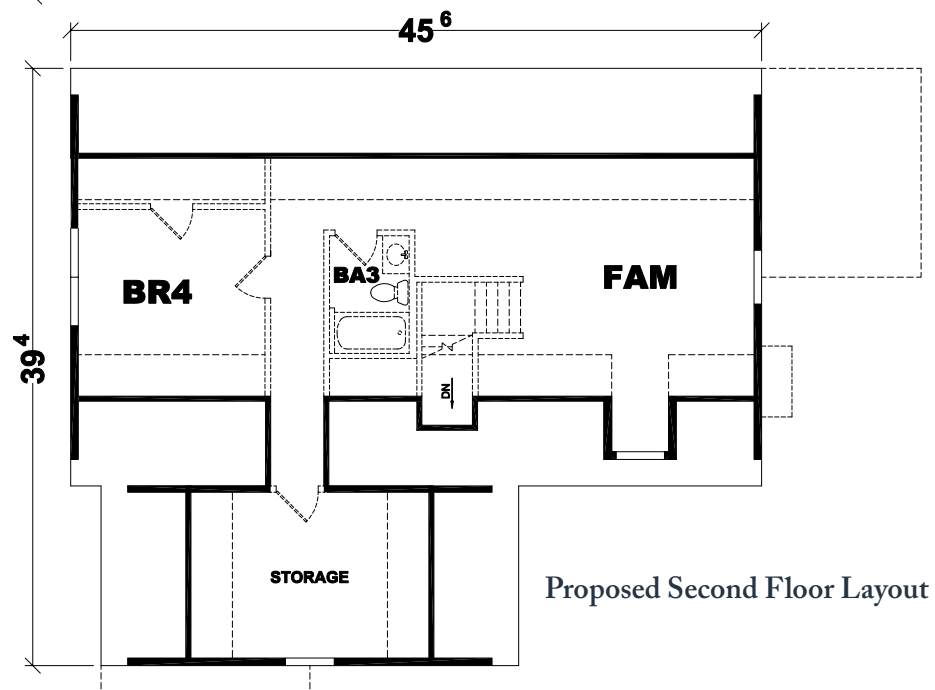
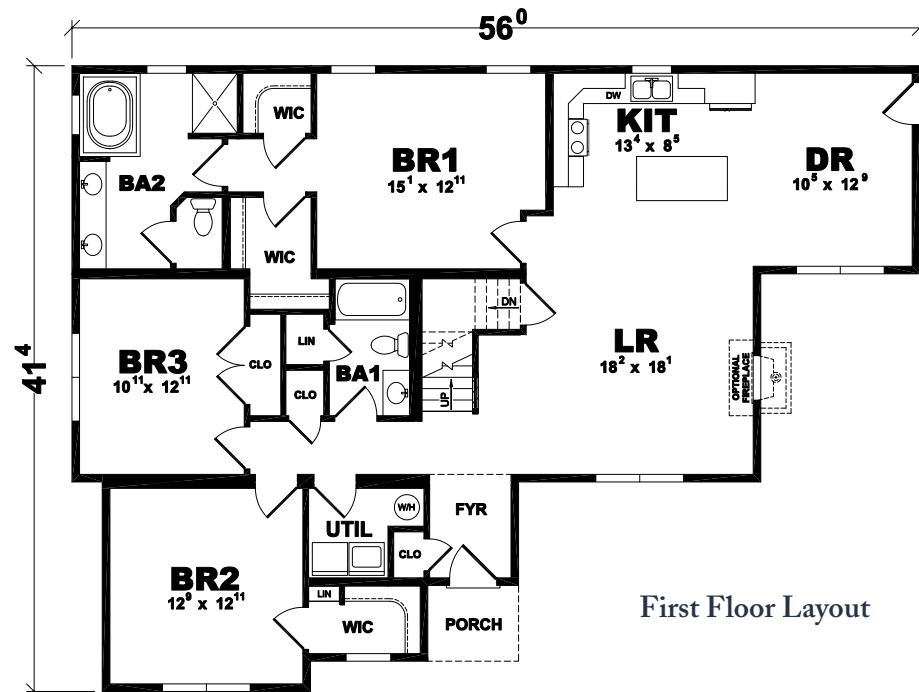
In the spacious Sullivan home, you'll find room for everything – most importantly, your imagination. The four bedrooms (three downstairs, one up) each includes a walk-in closet. The master bedroom, in fact, generously provides two. The upstairs family room can serve as just that ... or as a home office, or a game room with a view. Speaking of view, you can express your own with optional dormers, fireplace, porch and other details inside and out.

ConnecticutModularHome.com

370 Hope Street, Box 2302, Stamford, CT 06906 USA C:203.677.1187 E: CTModular@gmail.com

1st Floor = 1,719
 Proposed 2nd Floor = 960

 Proposed Total = 2,679 S.F.



PLAN: GUTHRIE

SERIES: AMERICAN LIFESTYLE



FROM FORMAL TO RELAXED,
AND EVERYTHING IN BETWEEN



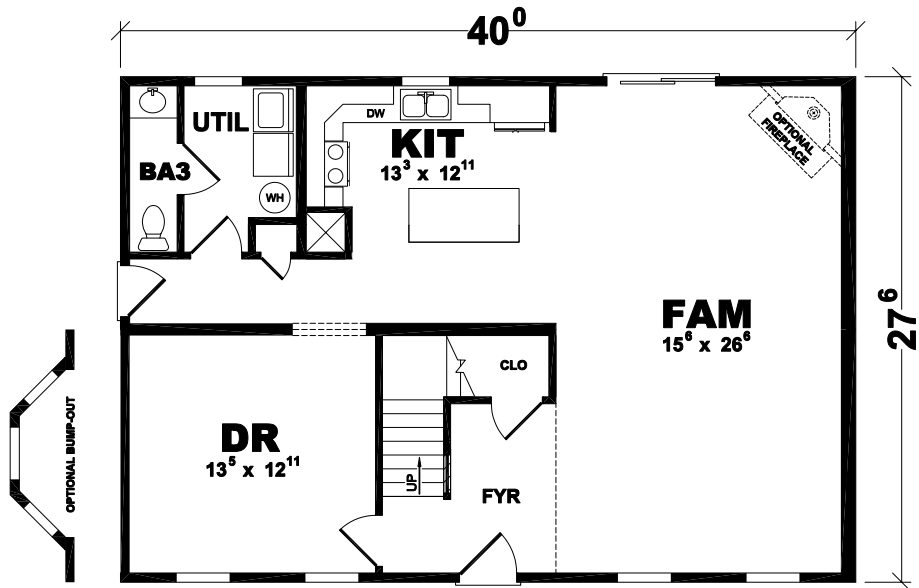
The possibilities open up in your Guthrie home. Innovative open design brings kitchen and family room spaces together, allowing you to prepare meals and catch up with your family and friends at the same time. You can even invite them for an informal snack at the kitchen island. Upstairs provides the full complement of three bedrooms, including the master bedroom suite with ample bathroom and walk-in closet.

ConnecticutModularHome.com

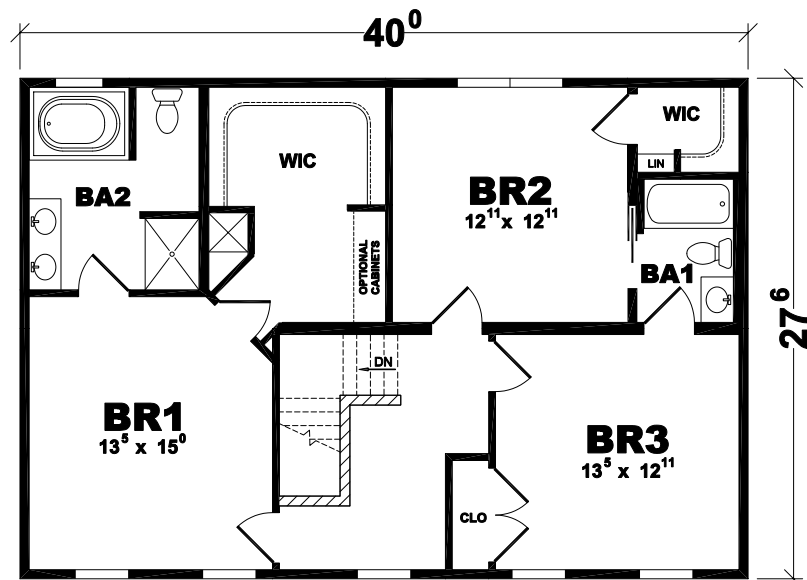
370 Hope Street, Box 2302, Stamford, CT 06906 USA C:203.677.1187 E: CTModular@gmail.com

1st Floor = 1,100
 2nd Floor = 1,100

 Total = 2,200 S.F.



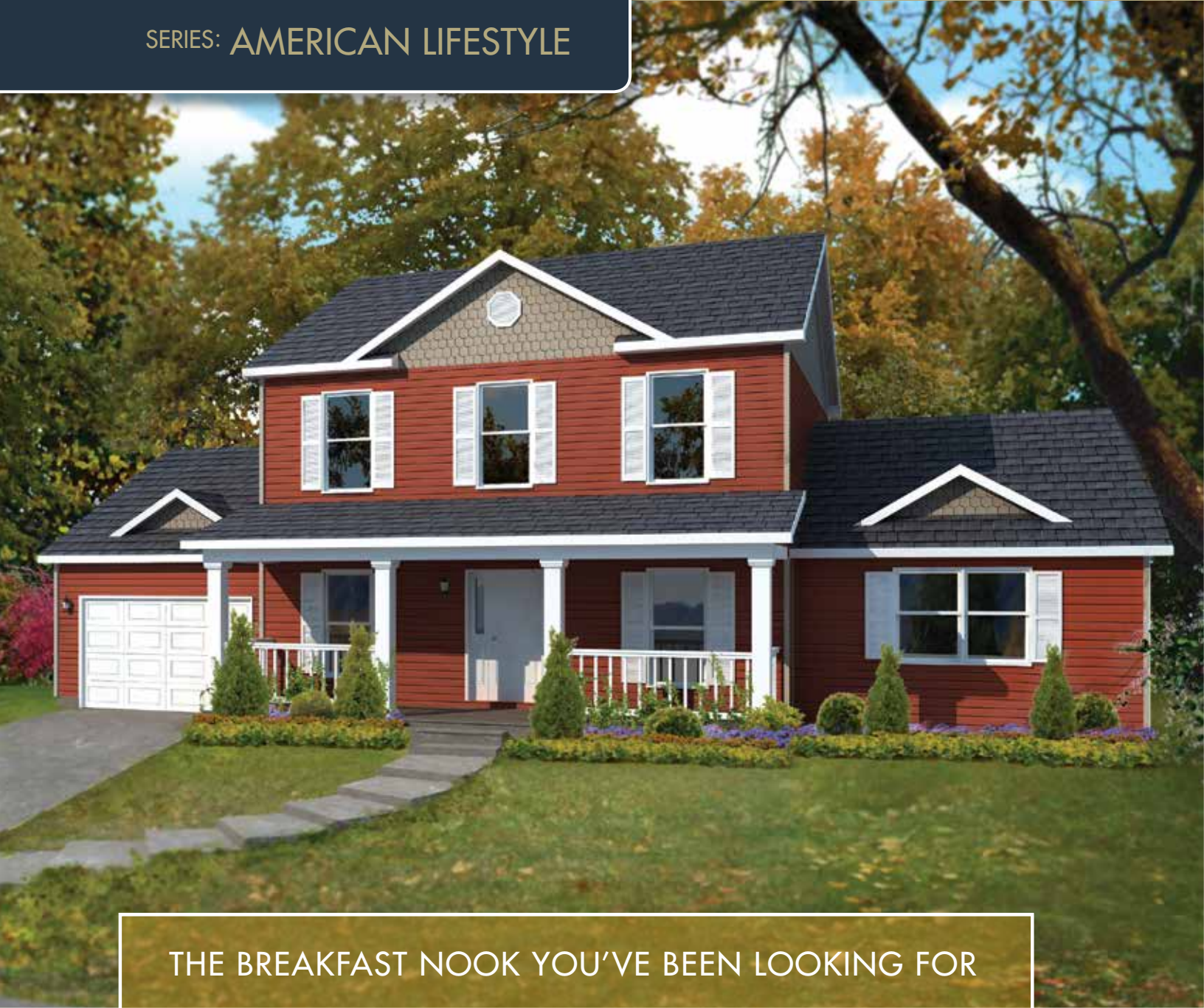
First Floor Layout



Second Floor Layout

PLAN: CHARLOTTE

SERIES: AMERICAN LIFESTYLE



THE BREAKFAST NOOK YOU'VE BEEN LOOKING FOR

For all its efficiency – the smart design brings together four bedrooms and four bathrooms into an integrated layout – the Charlotte doesn't skimp on cozy charm. From the front porch and inviting foyer to the sunlit nook connecting the kitchen and living room, this is a home design to help you bring it all together. Especially when you opt for the attached garage!

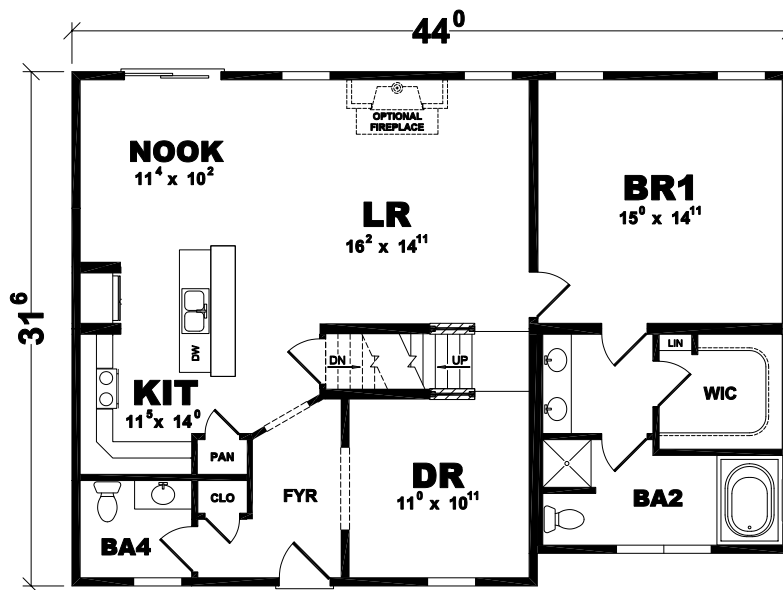
ConnecticutModularHome.com

370 Hope Street, Box 2302, Stamford, CT 06906 USA C:203.677.1187 E: CTModular@gmail.com

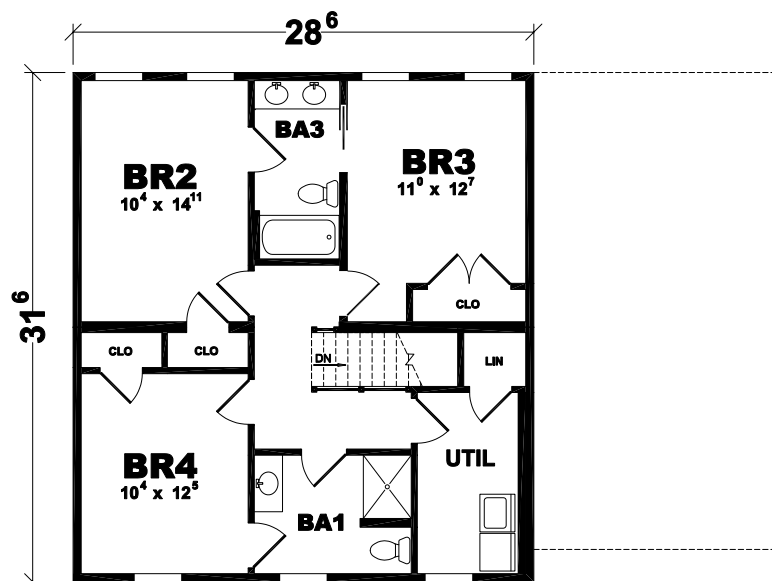
1st Floor = 1,355

2nd Floor = 898

Total = 2,253 S.F.



First Floor Layout



Second Floor Layout

PLAN: BELLMEADE

SERIES: AMERICAN LIFESTYLE



UNCOMPROMISING DESIGN, OPTIONS AND COMFORT

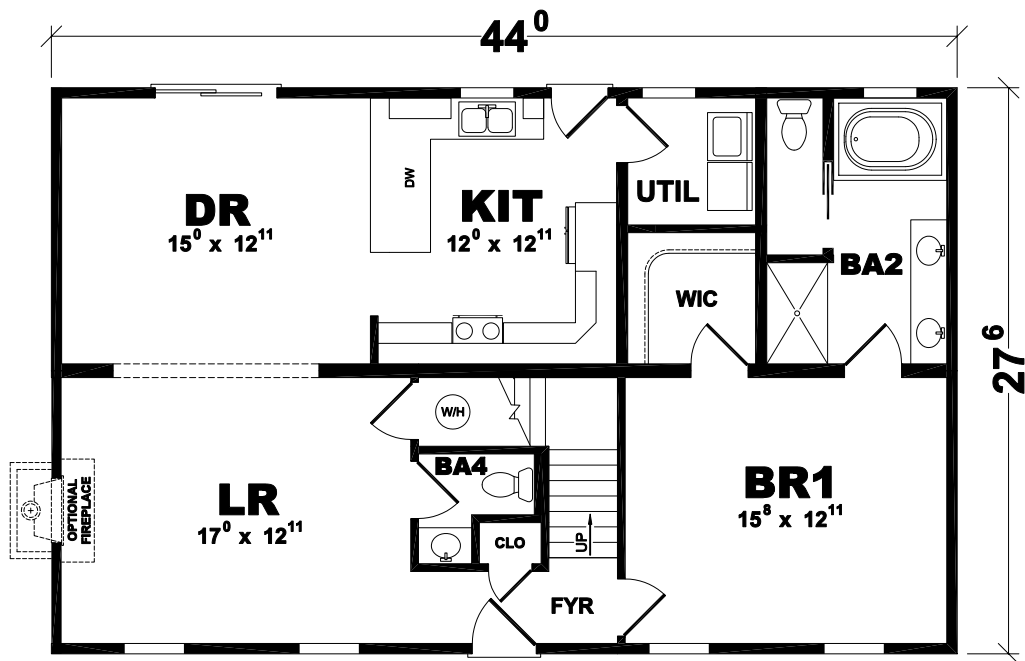
Maximize your living space, your views and your options with the uncompromising design of the Bellmeade. You'll appreciate coming home to four bedrooms, spacious living and dining rooms, plus a family room as big as all outdoors. Speaking of which, you'll be able to enjoy the outside view from the generous expanse of the optional front porch or through the multitude of windows that open your home to natural beauty and light. Take advantage of the endless options and uncompromising appointments of the Bellmeade – and bring your family home to a new level of comfort.

ConnecticutModularHome.com

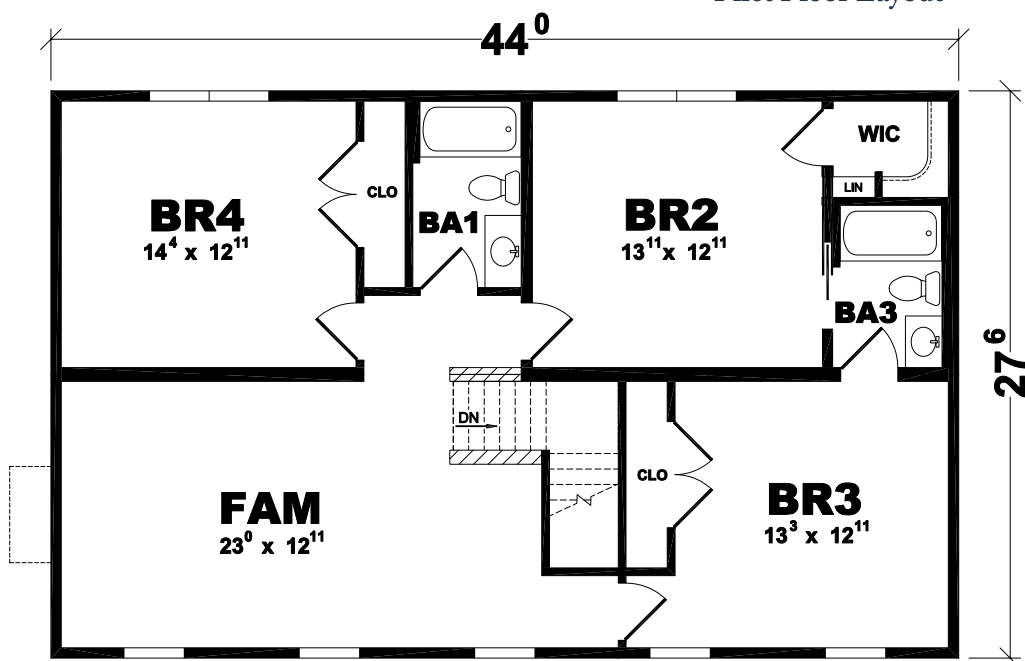
370 Hope Street, Box 2302, Stamford, CT 06906 USA C:203.677.1187 E: CTModular@gmail.com

1st Floor = 1,210
 2nd Floor = 1,210

 Total = 2,420 S.F.



First Floor Layout



Second Floor Layout

PLAN: MANCHESTER

SERIES: AMERICAN LIFESTYLE



WHICH ONE WILL YOU CHOOSE?

Of all the options offered by your Manchester home, which bedroom suite to call your own just might be your toughest decision to make. Upstairs or downstairs suites include roomy walk-in closets and spacious bathrooms with his/hers vanity. The total package – four bedrooms and four baths, a wide-open living room/dining room design, plus an ample kitchen with island – make the Manchester a home concept with room for your family to move, grow and relax.

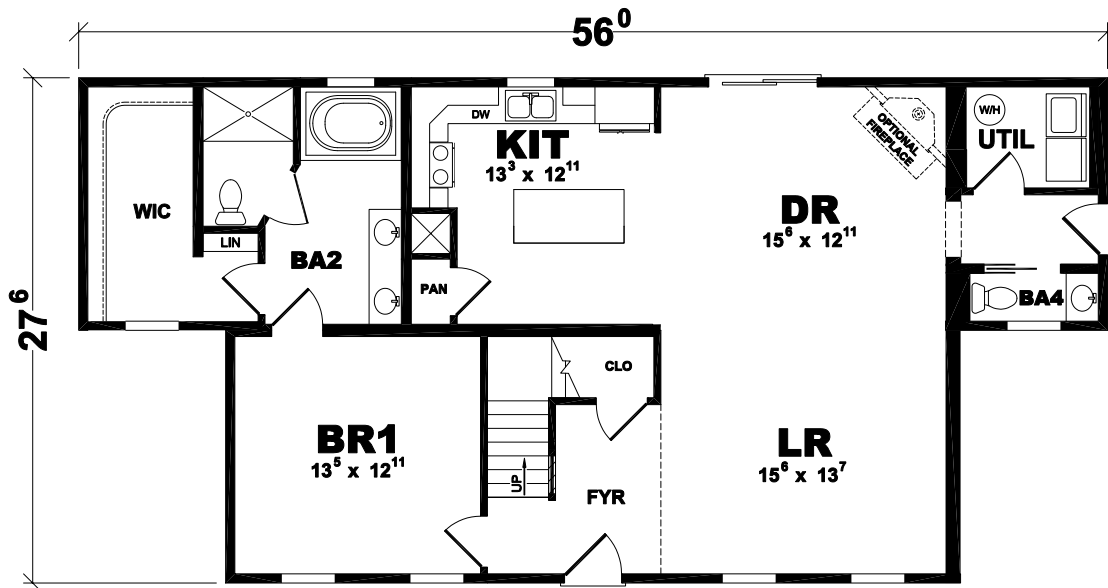


ConnecticutModularHome.com

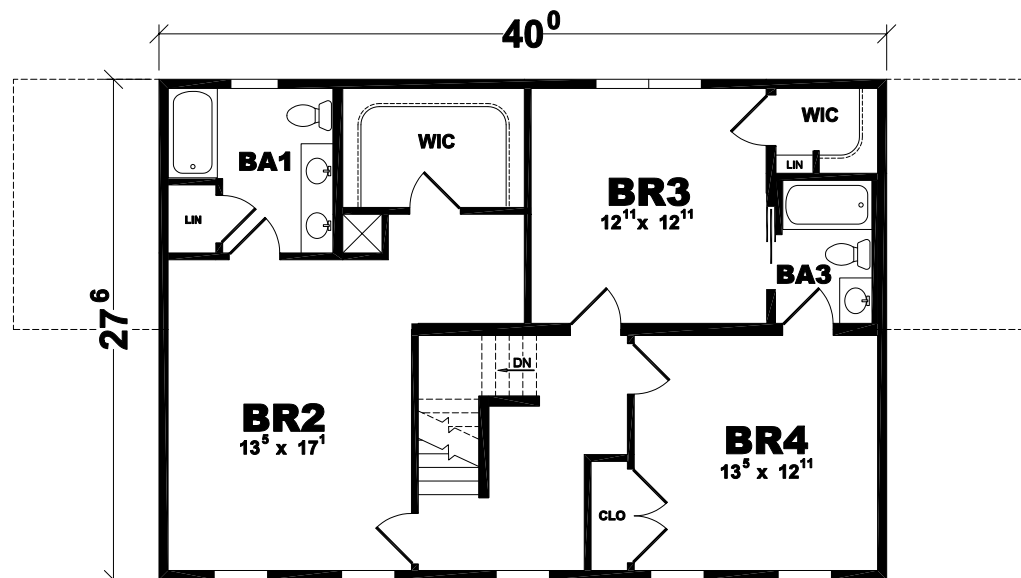
370 Hope Street, Box 2302, Stamford, CT 06906 USA C 203.677.1187 E: CTModular@gmail.com

1st Floor = 1,320
 2nd Floor = 1,100

 Total = 2,420 S.F.



First Floor Layout



Second Floor Layout



ConnecticutModularHomes.com

Call Us Today for a Custom House Quote!
370 Hope Street, Box 2302, Stamford, CT 06906 USA C:203.677.1187 E: CTModular@gmail.com





ConnecticutModularHomes.com