



a GPG
Company
370 Hope Street
Unit 2302
Stamford, CT 06906

Phone: 203.965.0084
Fax: 815.346.1936
C: 203.667.1187
E: CTCTmodular@gmail.com
HIC#0634875



ConnecticutModularHomes Design Book

2 Story Homes plus

Other Books Available—Multi, Capes, Ranches, Raised Ranch...





a GPG
Company
370 Hope Street
Unit 2302
Stamford, CT 06906

Phone: 203.965.0084
Fax: 815.346.1936
C: 203.667.1187
E: CTCTmodular@gmail.com
HIC#0634875



Bryn Mawr

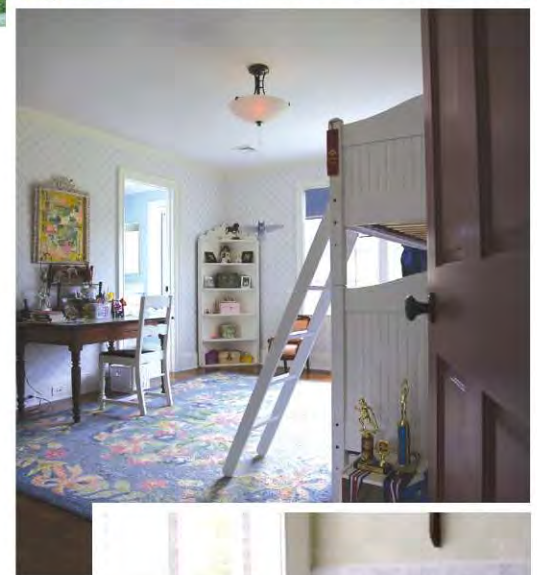
4,127 Square Feet | 4 Bedrooms | 2 ½ Baths

Plan Number: HC-H2-BM.4127

Width: 59'-6" (81'-6" with optional garage and bonus room) – Depth: 41'-0"



Dimensions and specifications are approximate and may vary and are subject to change. Interior images are representative of detail quality and may or may not be actual photos from this model.



Bryn Mawr

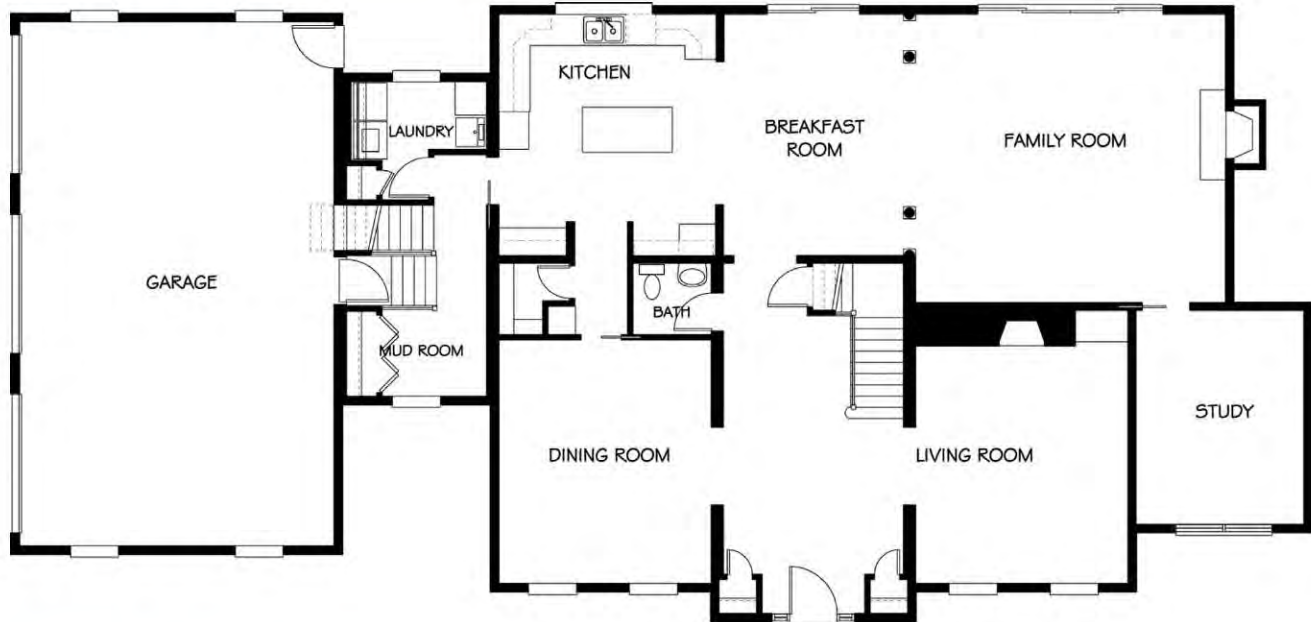
4,127 Square Feet | 4 Bedrooms | 2 ½ Baths

Plan Number: HC-H2-BM.4127

Width: 59'-6" (81'-6" with optional garage and bonus room) – Depth: 41'-0"

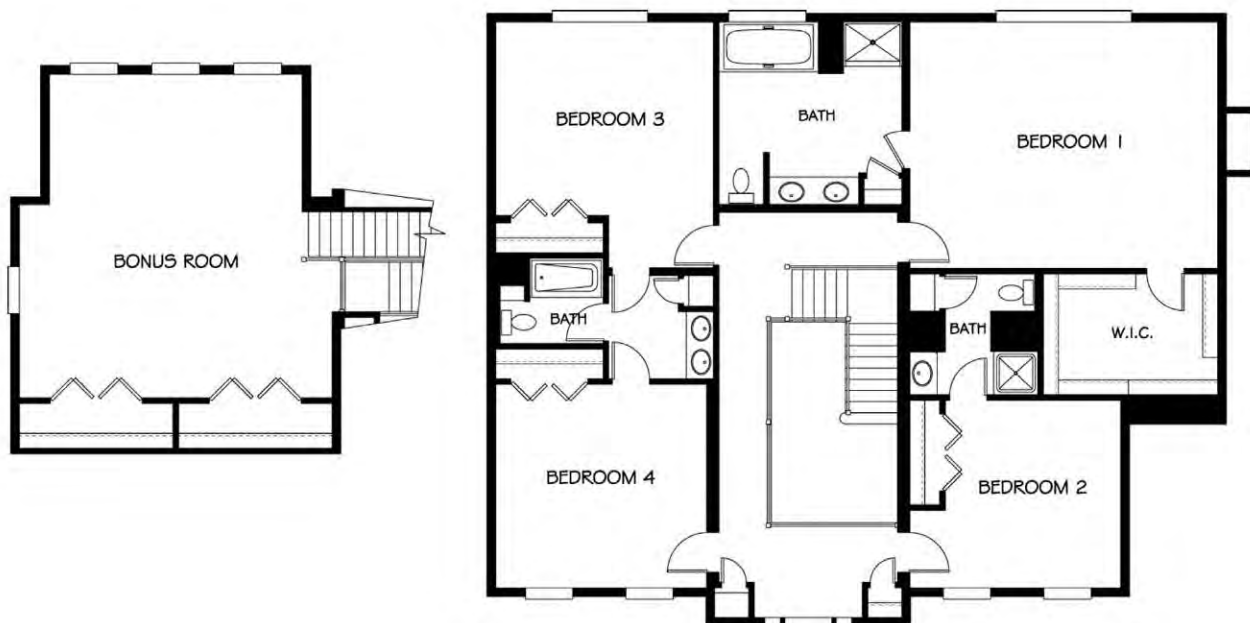
First Floor

2,216 SF



Second Floor

1,911 SF



ConnecticutModularHomes.com

Charleston Townhome

1,476 Square Feet | 2 Bedrooms | 2 ½ Baths
Plan Number: HC-JTA-CHSTN-TH
Width: 15'-9" – Depth: 48'-0"



John Tee has a deep appreciation for the rich history of Southern domestic architecture and combines over 30 years of experience as a licensed architect with hands-on knowledge of home construction. In addition to designing custom homes, John has also been a long time contributor to Southern Living magazine and has designed four of their annual Southern Living Idea Houses. His work has also been featured in Cooking Light, Progressive Farmer and Coastal Living magazines.

Dimensions and specifications are approximate and may vary or are subject to change. Interior images are representative of detail quality and may or may not be actual photos from this model.

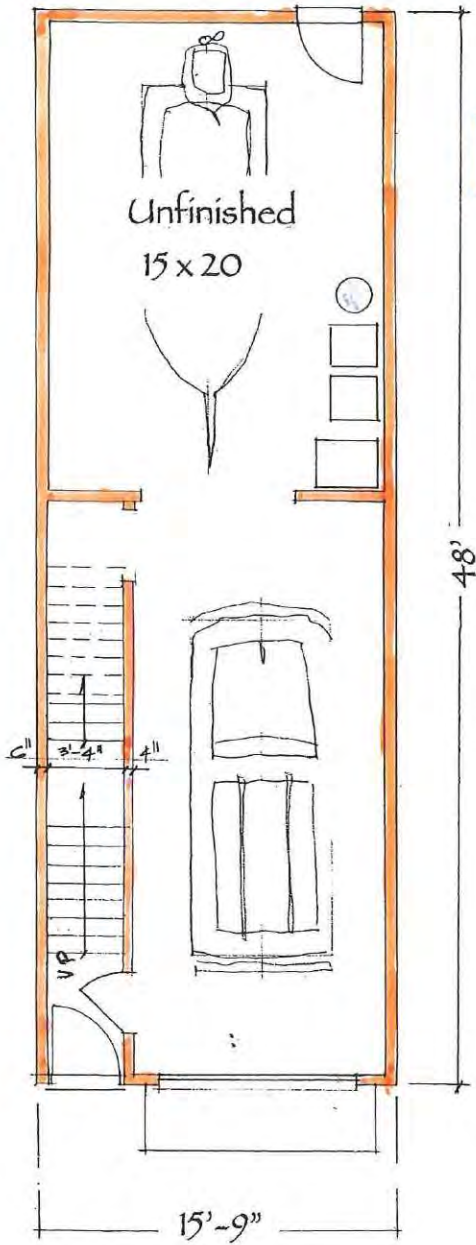
JOHN TEE ARCHITECT
Residential Architect



Charleston Townhome

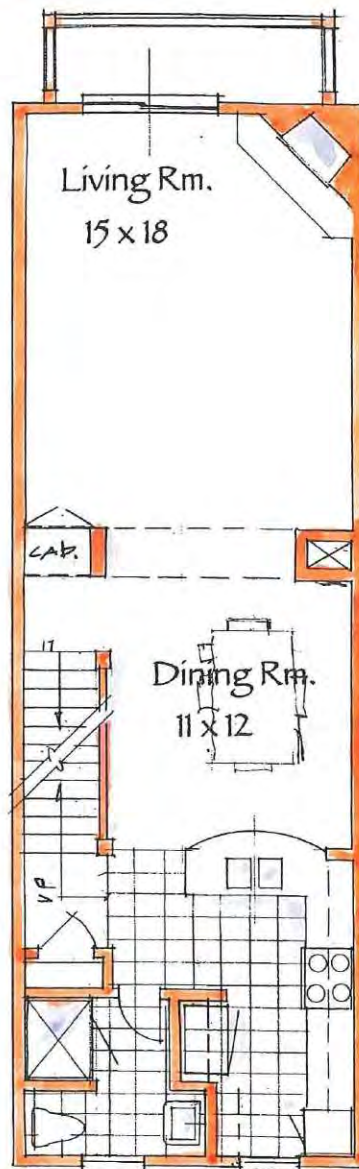
1,476 Square Feet | 2 Bedrooms | 2 1/2 Baths
Plan Number: HC-JTA-CHSTN-TH
Width: 15'-9" - Depth: 48'-0"

First Floor



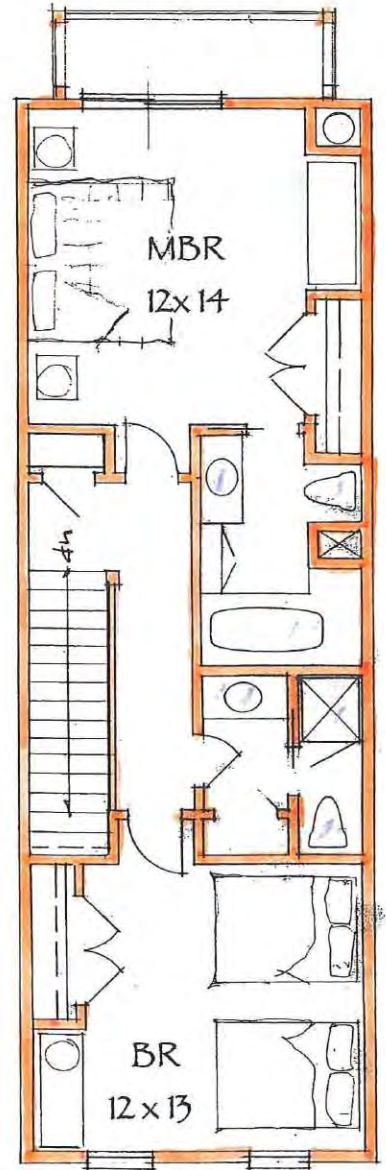
Second Floor

756 SF



Third Floor

720 SF



ConnecticutModularHomes.com

Bryn Mawr

4,127 Square Feet | 4 Bedrooms | 2 ½ Baths

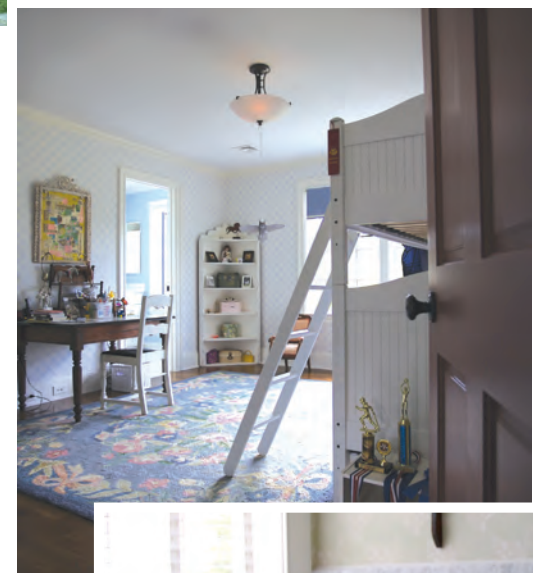
Plan Number: HC-H2-BM.4127

Width: 59'-6" (81'-6" with optional garage and bonus room) – Depth: 41'-0"



- Northeast homes are traditional and grandiose offering a library or den with intricate roof pitches.
- Southern Coastal homes offer the low-county feel with most plans including a great room and beautiful sweeping porches.

Dimensions and specifications are approximate and may vary and are subject to change. Interior images are representative of detail quality and may or may not be actual photos from this model.



Bryn Mawr

4,127 Square Feet | 4 Bedrooms | 2 ½ Baths

Plan Number: HC-H2-BM.4127

Width: 59'-6" (81'-6" with optional garage and bonus room) – Depth: 41'-0"

First Floor

2,216 SF



ConnecticutModularHomes.com



Second Floor

1,911 SF



Gwynedd

5,126 Square Feet | 5 Bedrooms | 5 ½ Baths

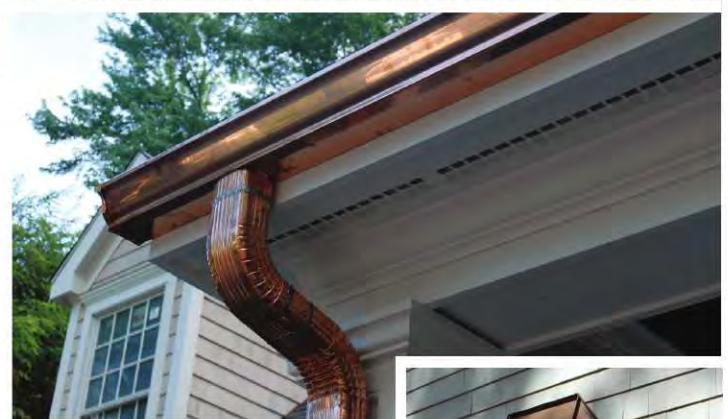
Plan Number: HC-H2-GWNED.5126

Width: 96'-9" – Depth: 48'-0"



- Northeast homes are traditional and grandiose offering a library or den with intricate roof pitches.
- Southern Coastal homes offer the low-county feel with most plans including a great room and beautiful sweeping porches.

*Dimensions and specifications may vary and are subject to change.
Interior images are representative of detail quality and may or may not be actual photos from this model.*



First Floor

2,996 SF



Second Floor

2,130 SF



Jefferson D

4,467 Square Feet | 5 Bedrooms | 3 Baths
Plan Number: GPG-CTMod_JeffersonD_HV
Width: 44'-8" – Depth: 80'-0"



GPG

Construction Services

GPG is a full service building firm with a commitment to excellence in construction & service. Through a partnership with Connecticut ModularHomes.com, together they provide the highest level of attention to the smallest details in every home.

A partnership that makes the ordinary > Extraordinary

Being local with a understanding of local conditions and engineering codes is a must if your house is to be done on time & budget!

*Dimensions and specifications are approximate and may vary or are subject to change.
Interior images are representative of detail quality and may or may not be actual photos from this model.*



Jefferson D

4,467 Square Feet | 5 Bedrooms | 3 Baths
 Plan Number: GPG-CTMod_JeffersonD_HV
 Width: 44'-8" – Depth: 80'-0"

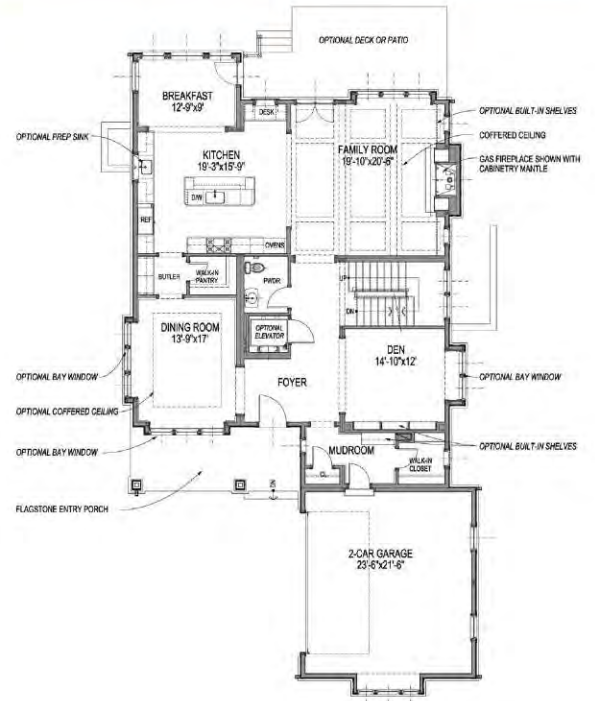
Optional Basement

1,834 SF



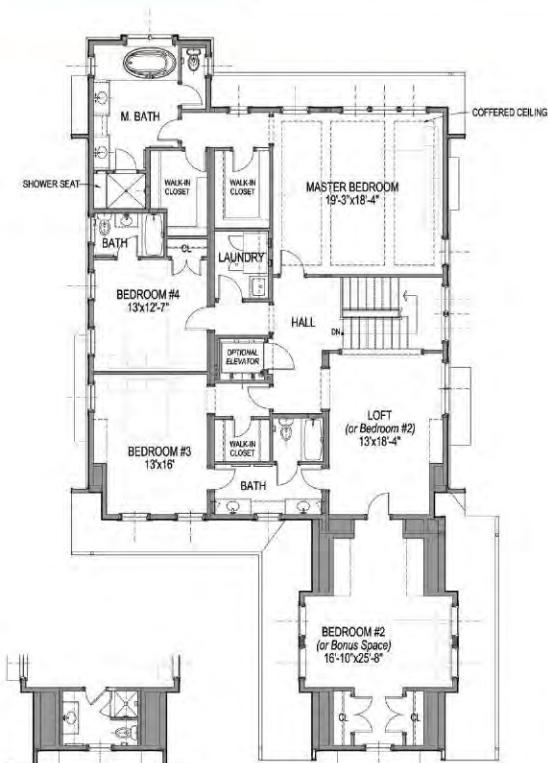
First Floor

2,049 SF



Second Floor

2,418 SF



OPTIONAL BATHROOM LAYOUT



GPG

Construction Services



ConnecticutModularHomes.com



Kennett

4,210 Square Feet | 4 Bedrooms | 3 ½ Baths

Plan Number: HC-H2-KNET.4210

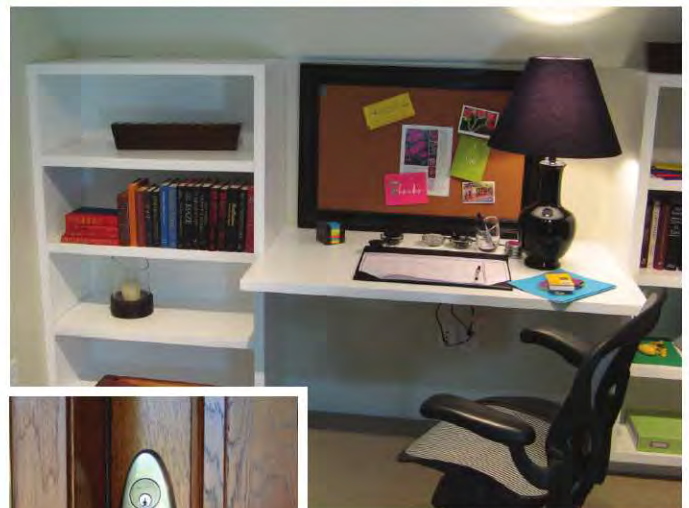
Width: 89'-4" – Depth: 45'-0"



- Northeast homes are traditional and grandiose offering a library or den with intricate roof pitches.
- Southern Coastal homes offer the low-county feel with most plans including a great room and beautiful sweeping porches.

Dimensions and specifications may vary and are subject to change.

Interior images are representative of detail quality and may or may not be actual photos from this model.



Kennett

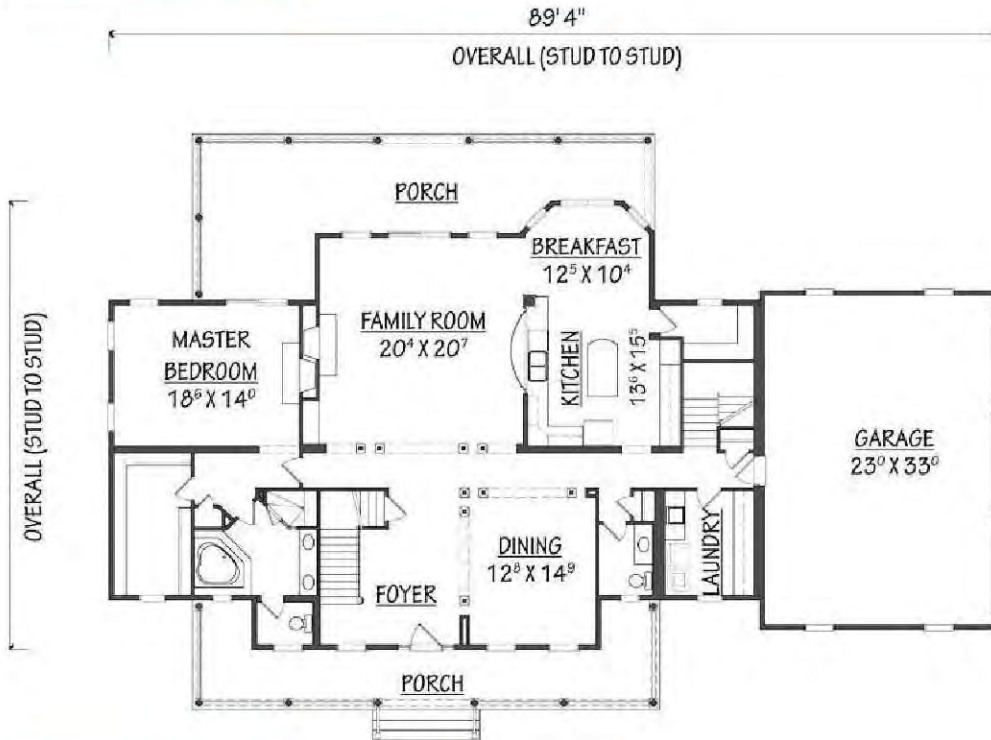
4,210 Square Feet | 4 Bedrooms | 3 1/2 Baths

Plan Number: HC-H2-KNET.4210

Width: 89'-4" – Depth: 45'-0"

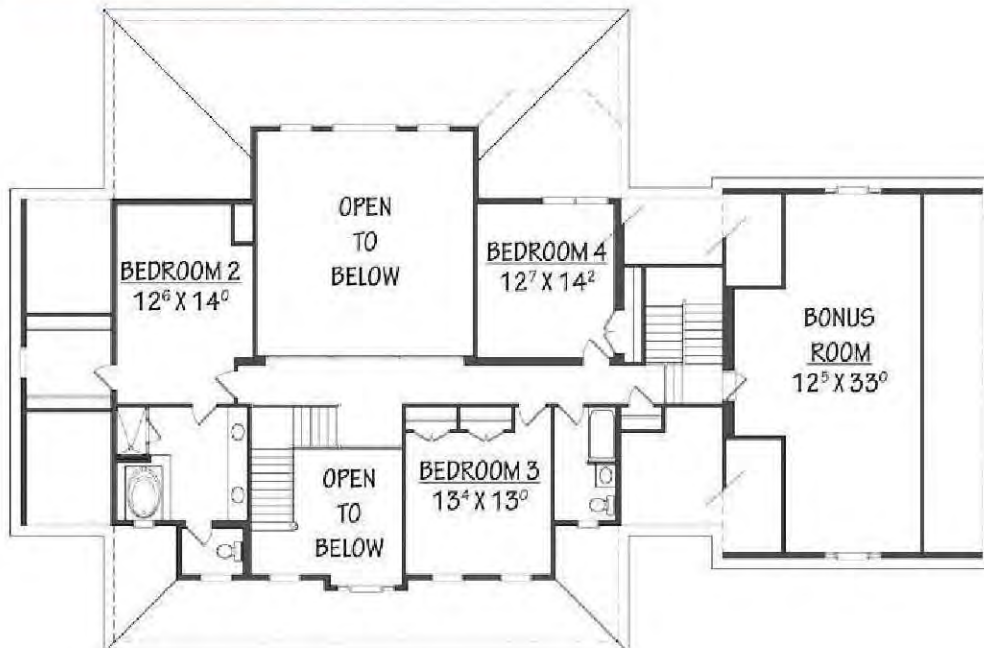
First Floor

2,399 SF



Second Floor

1,811 SF



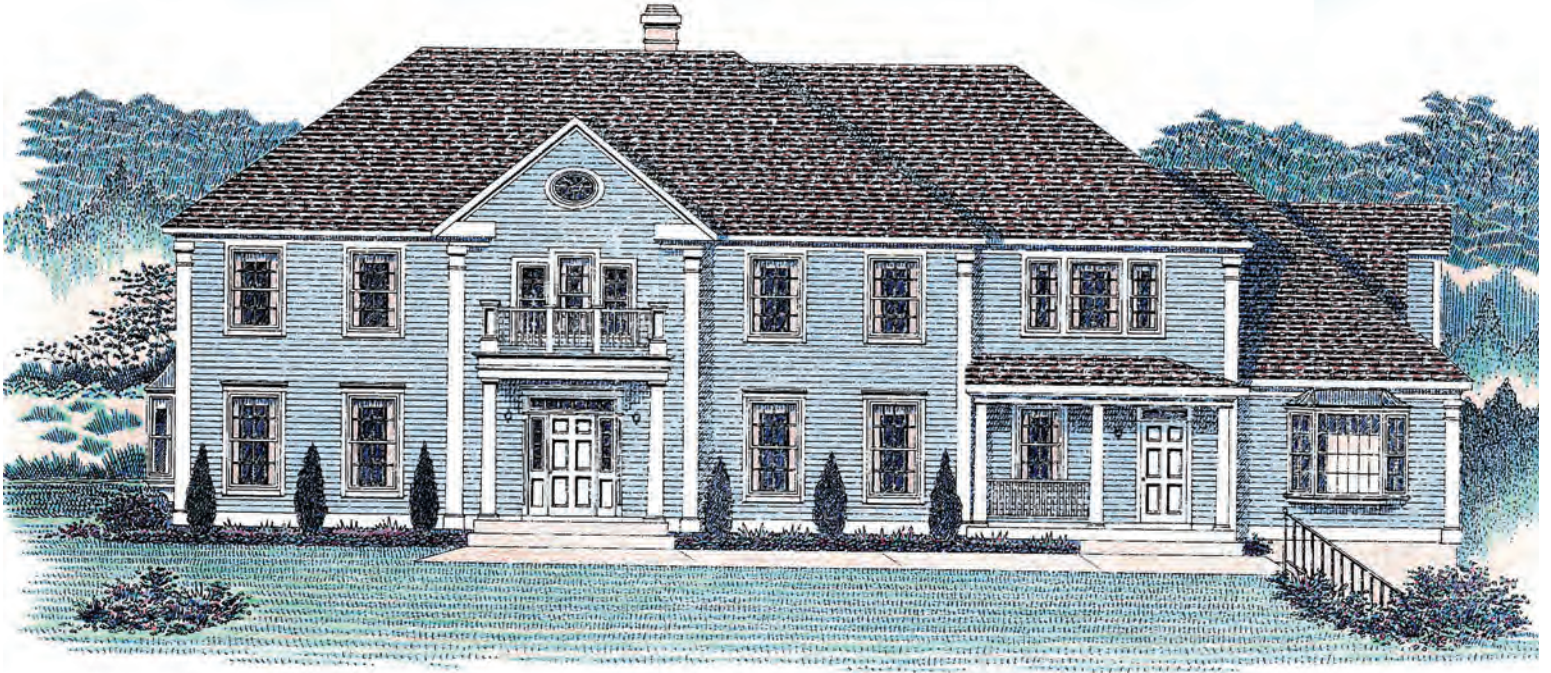
ConnecticutModularHomes.com

Laurelcrest

4,836 Square Feet | 5 Bedrooms | 4 Full/2 Half Baths | 2 Powder Rooms

Plan Number: HC-H2-LRLCST.4836

Width: 83'-9" – Depth: 35'-6"



GPG

Construction Services

For 35 years, 9B9 has provided architectural designs that incorporate the home's surroundings. This design series include a wide selection of designs for homes in the Northeast and Coastal regions.

- Northeast homes are traditional and grandiose offering a library or den with intricate roof pitches.
- Coastal homes offer the low-county feel with most plans including a great room and beautiful sweeping porches.

Dimensions and specifications may vary and are subject to change.

Interior images are representative of detail quality and may or may not be actual photos from this model.



ConnecticutModularHomes.com

Laurelcrest

4,836 Square Feet | 5 Bedrooms | 4 Full/2 Half Baths | 2 Powder Rooms

Plan Number: HC-H2-LRLCST.4836

Width: 83'-9" – Depth: 35'-6"

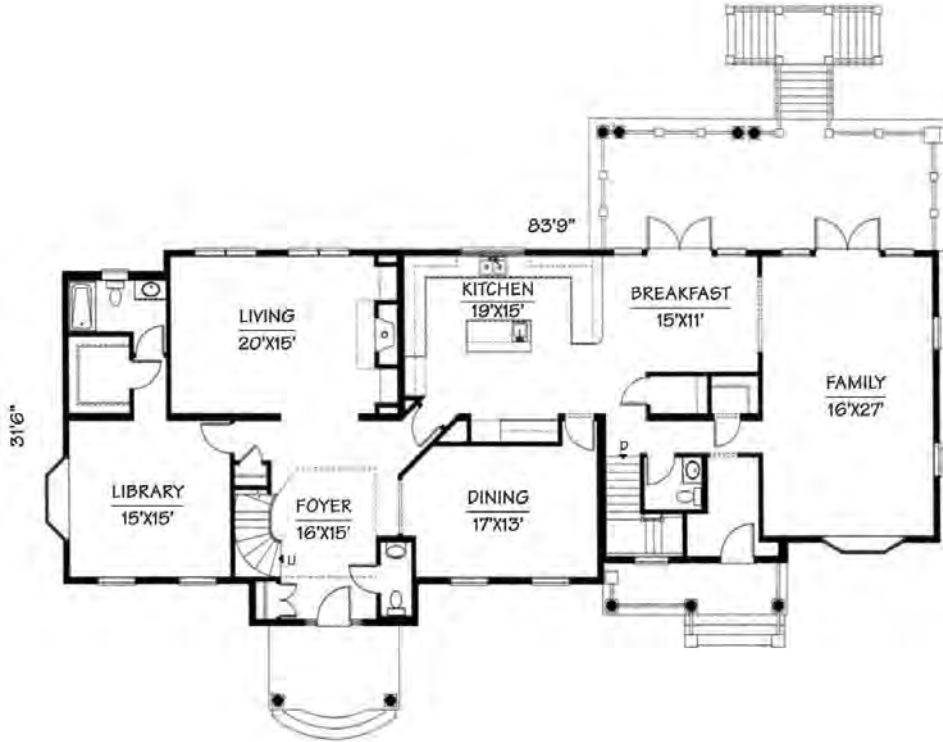
First Floor

2,634 SF



GPG

Construction Services



Second Floor

2,202 SF



ConnecticutModularHomes.com

Valley Forge

5,057 Square Feet | 5 Bedrooms | 3.5 Baths
Plan Number: HC-H2-VLYFRG.5057
Width: 92'-0" – Depth: 50'-0"



*Dimensions and specifications may vary and are subject to change.
Interior images are representative of detail quality and may or may not
be actual photos from this model.*

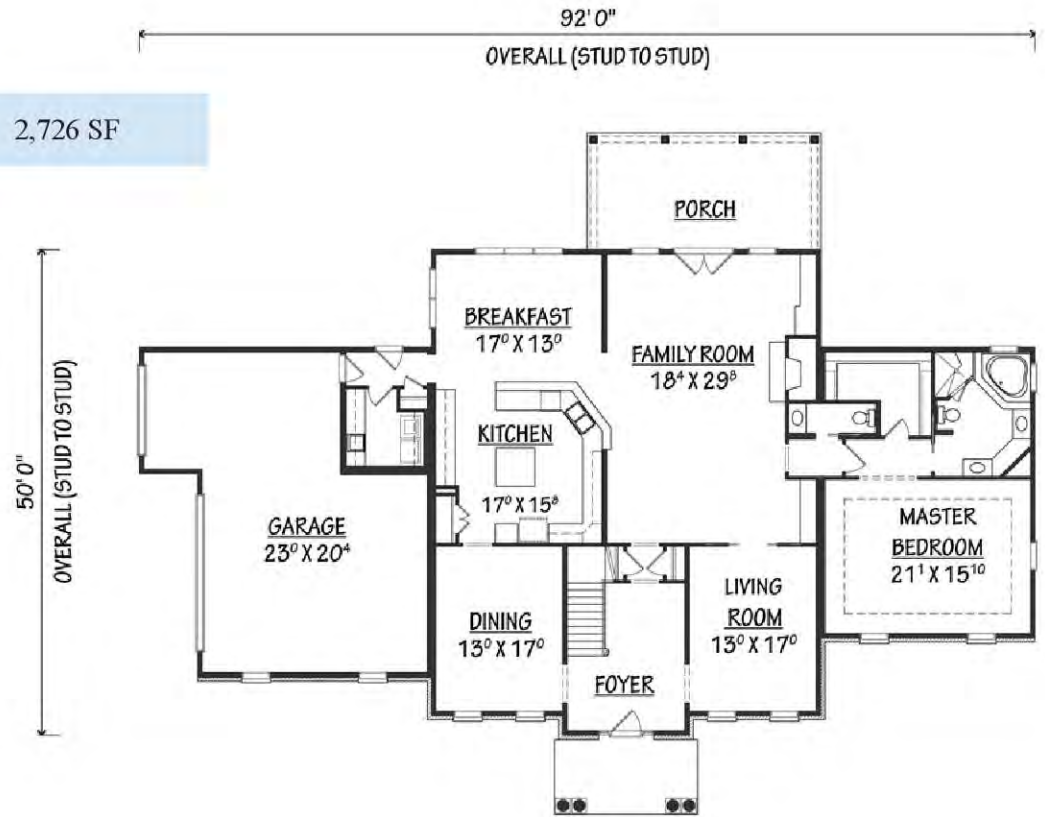


Valley Forge

5,057 Square Feet | 5 Bedrooms | 3.5 Baths
Plan Number: HC-H2-VLYFRG.5057
Width: 92'-0" – Depth: 50'-0"

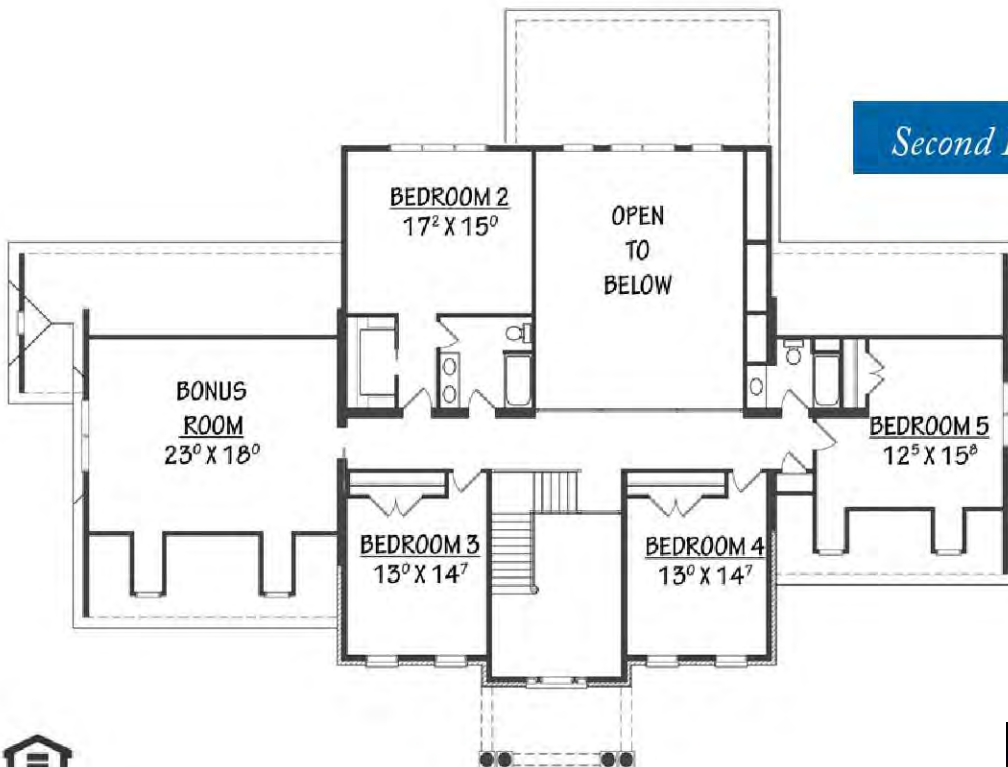
First Floor

2,726 SF



Second Floor

2,331 SF



Willow Grove

3,946 Square Feet | 4 Bedrooms | 3.5 Baths
Plan Number: HC-H2-WLGR.3946
Width: 87'-6" – Depth: 40'-10"



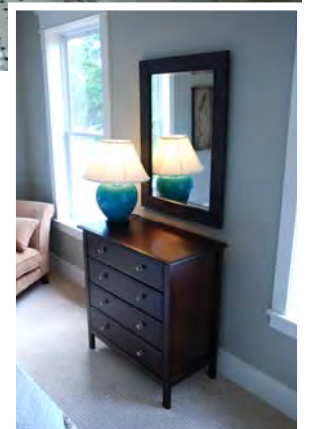
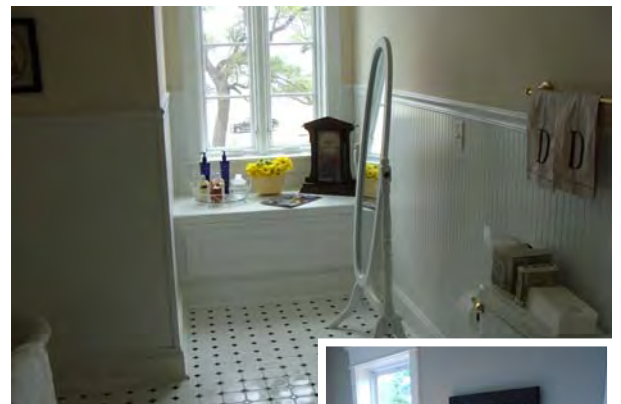
GPG

Construction Services

FZW \$Design has provided architectural designs that incorporate the home's surroundings. This design series include a wide selection of designs for homes in the Northeast and Southern Coastal regions.

- Northeast homes are traditional and grandiose offering a library or den with intricate roof pitches.
- Southern Coastal homes offer the low-county feel with most plans including a great room and beautiful sweeping porches.

*Dimensions and specifications may vary and are subject to change.
Interior images are representative of detail quality and may or may not be actual photos from this model. Co*



ConnecticutModularHomes.com

Willow Grove

3,946 Square Feet | 4 Bedrooms | 3.5 Baths
Plan Number: HC-H2-WLGR.3946
Width: 87'-6" - Depth: 40'-10"

First Floor

2,290 SF



Second Floor

1,656 SF

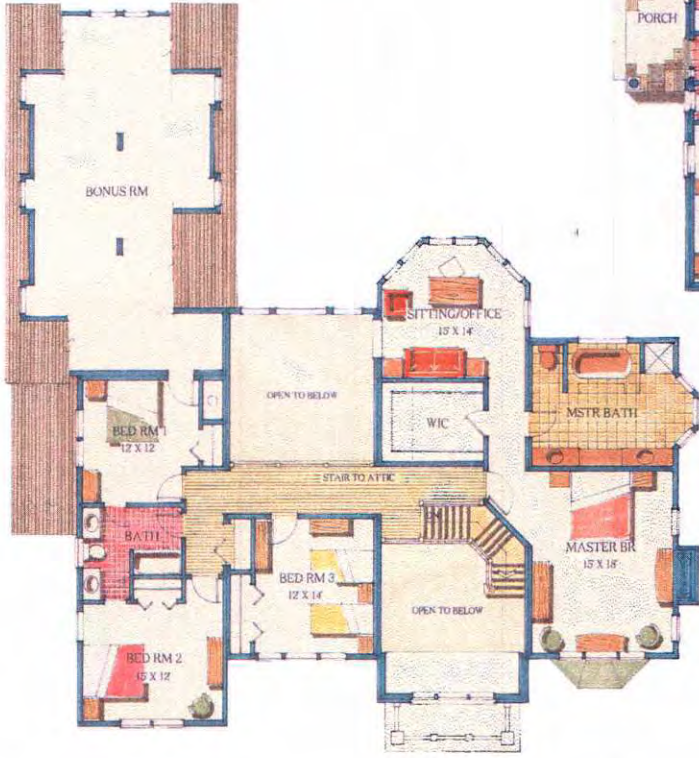




FRONT ELEVATION
SCALE: 3/16" = 1'-0"



FIRST FLOOR
SCALE: 3/16" = 1'-0"



SECOND FLOOR
SCALE: 3/16" = 1'-0"

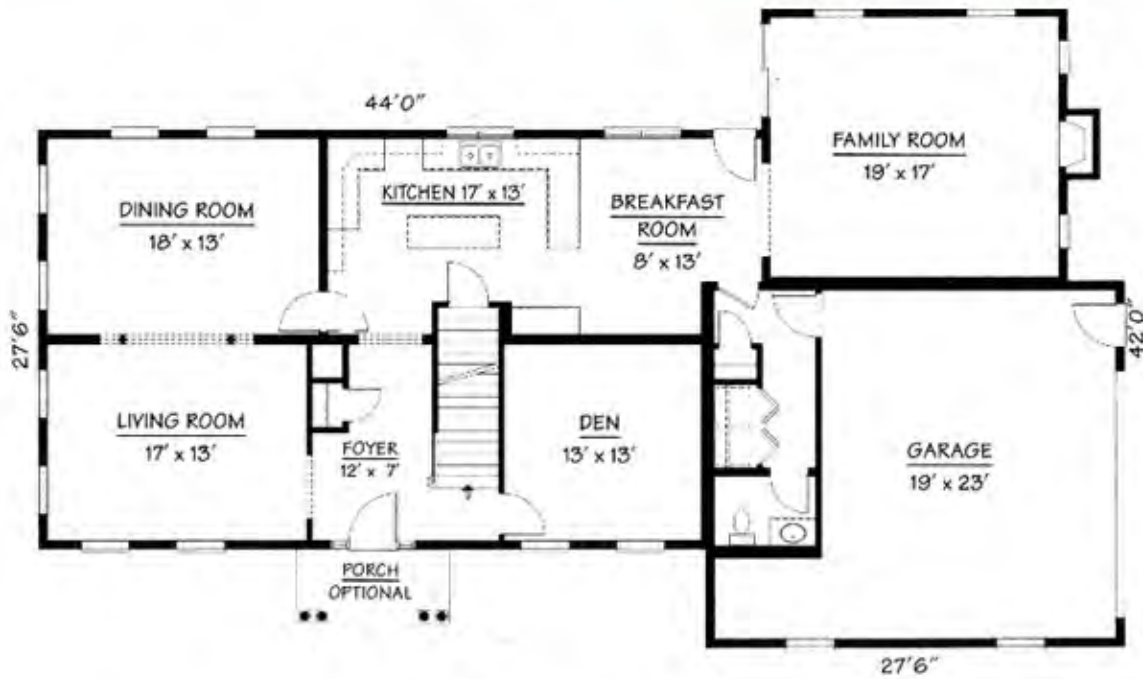
BUCKINGHAM

4,350 S.F.

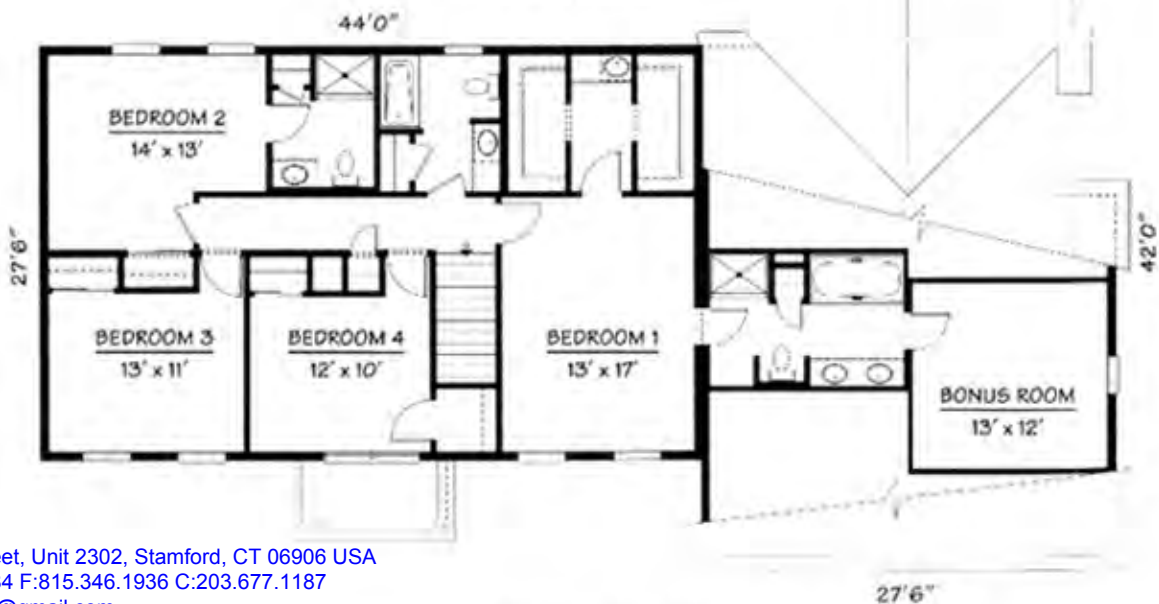
Adams 3068 sq.ft.



ConnecticutModularHomes.com



FIRST FLOOR



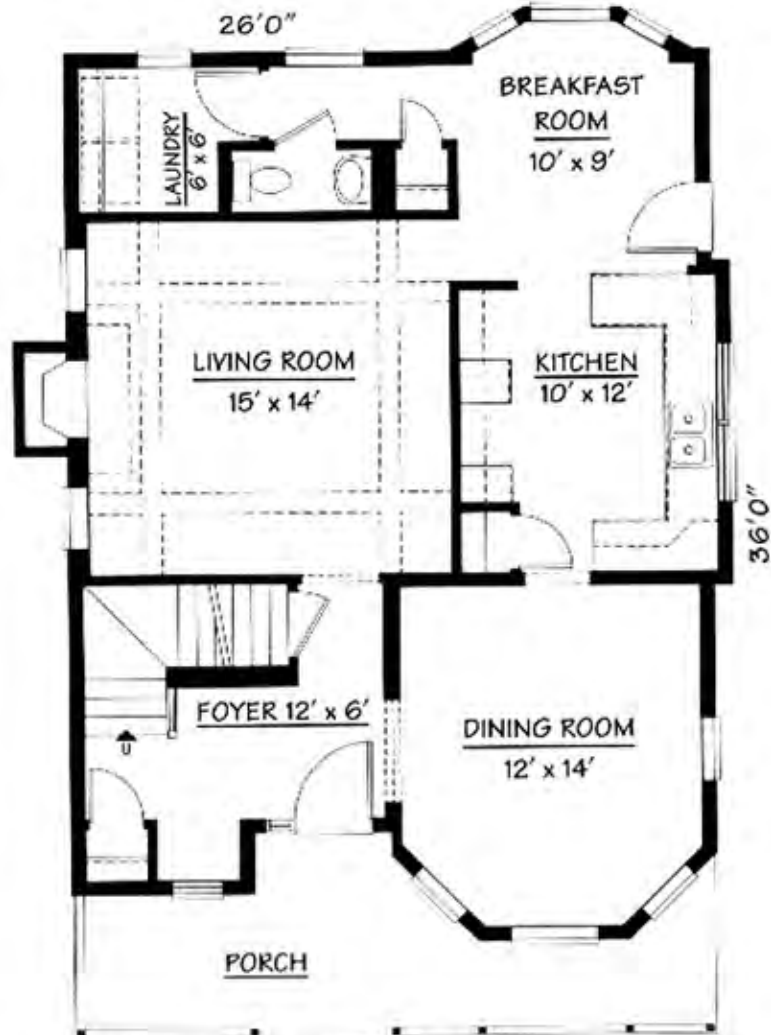
SECOND FLOOR

Ardmore 1721 sq.ft.



FIRST FLOOR

These plans are the property of GPG and it's owners. Any reproduction or use in whole or part without the permission of GPG's written authorization is prohibited. Any persons or companies found using these plans or parts of them will be responsible to compensate GPG and it's owners for their use and any legal expenses. For permission call GPG 203-667-1187

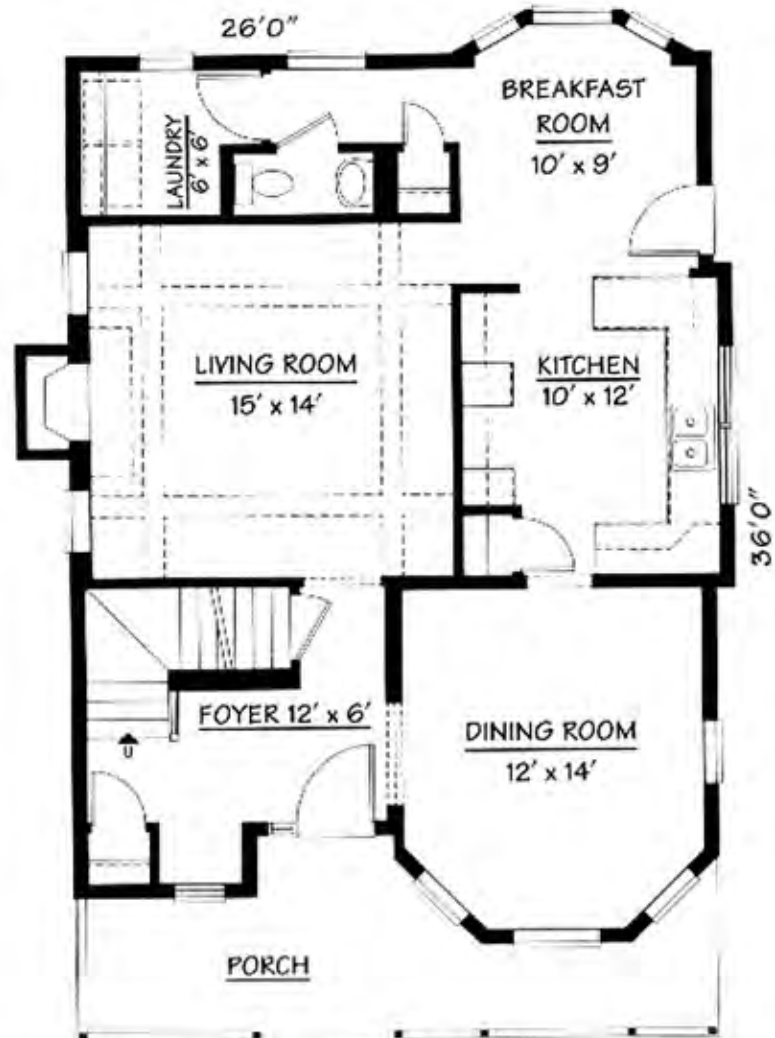


Ardmore 1721 sq.ft.



FIRST FLOOR

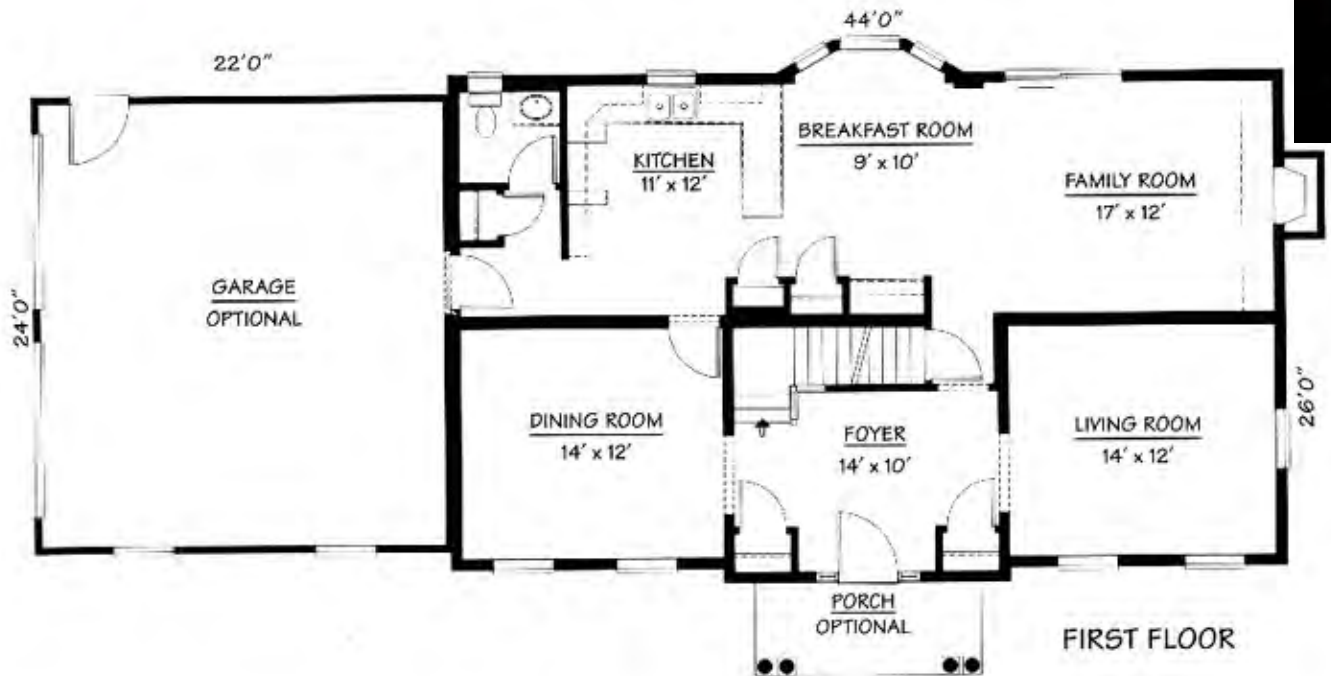
These plans are the property of GPG and it's owners. Any reproduction or use in whole or part without the permission of GPG's written authorization is prohibited. Any persons or companies found using these plans or parts of them will be responsible to compensate GPG and it's owners for their use and any legal expenses. For permission call GPG 203-667-1187



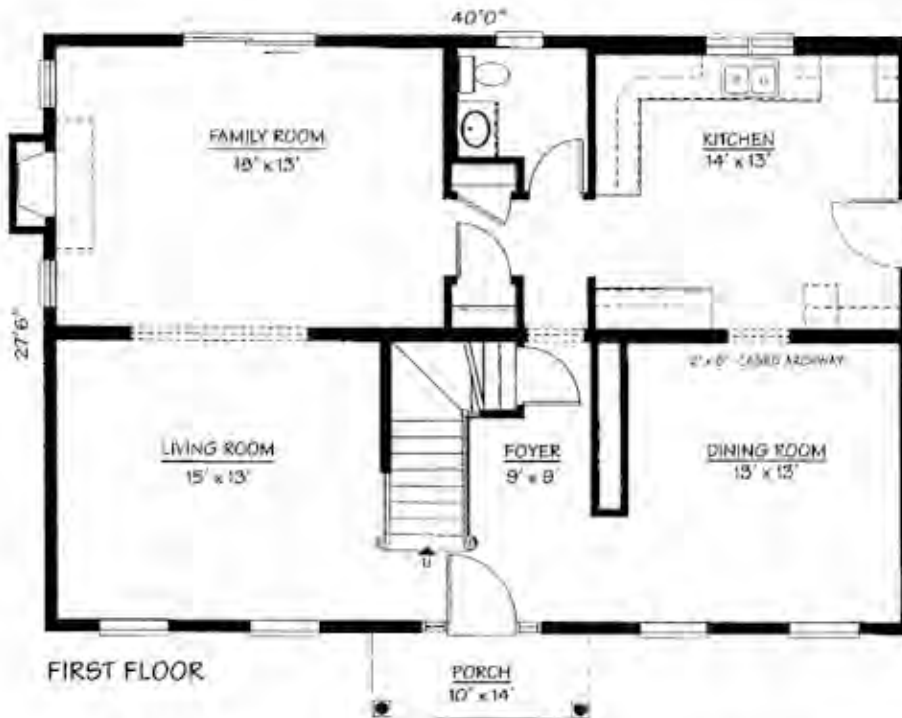
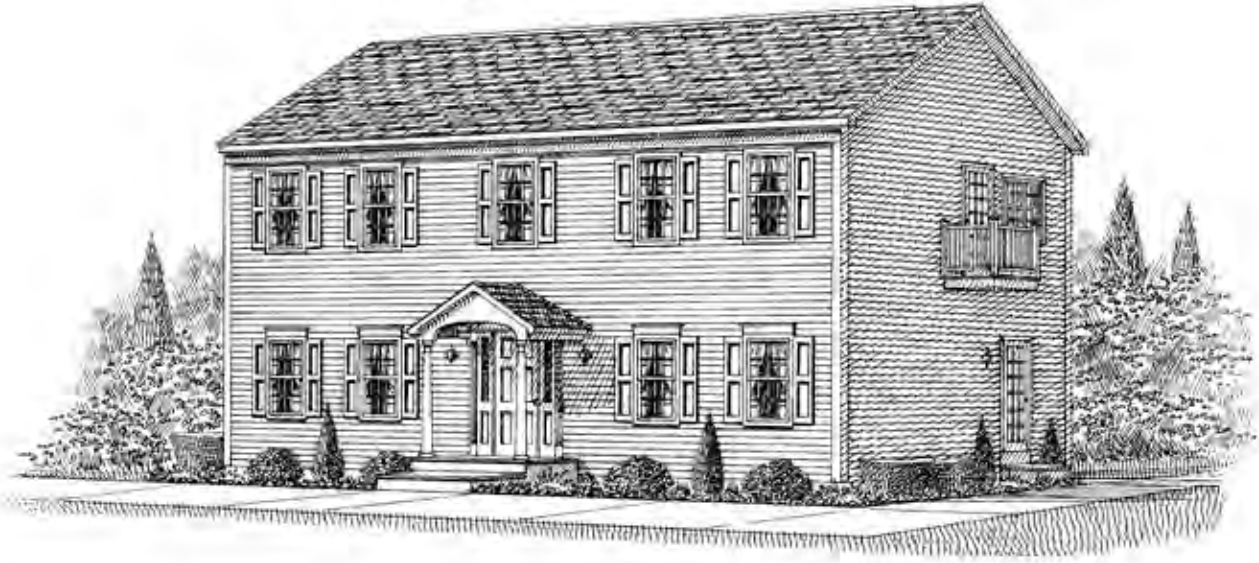
Arlington 2303 sq.ft.



ConnecticutModularHomes.com



Ballymore 2200 sq.ft.



These plans are the property of GPG and it's owners. Any reproduction or use in whole or part without the permission of GPG's written authorization is prohibited. Any persons or companies found using these plans or parts of them will be responsible to compensate GPG and it's owners for their use and any legal expenses. For permission call GPG 203-667-1187

ConnecticutModularHomes.com



Bryn Mawr 4127 sq.ft.



ConnecticutModularHomes.com



FIRST FLOOR



SECOND FLOOR

Cottonwood 3376 sq.ft.



FIRST FLOOR PLAN

These plans are the property of GPG and it's owners. Any reproduction or use in whole or part without the permission of GPG's written authorization is prohibited. Any persons or companies found using these plans or parts of them will be responsible to compensate GPG and it's owners for their use and any legal expenses. For permission call GPG 203-667-1187



SECOND FLOOR PLAN

Fairfax 2496 sq.ft.



These plans are the property of GPG and it's owners. Any reproduction or use in whole or part without the permission of GPG's written authorization is prohibited. Any persons or companies found using these plans or parts of them will be responsible to comensate GPG and it's owners for their use and any legal expenses. For permission call GPG 203-667-1187



FIRST FLOOR



SECOND FLOOR

Farmington 2303 sq.ft.



ConnecticutModularHomes.com

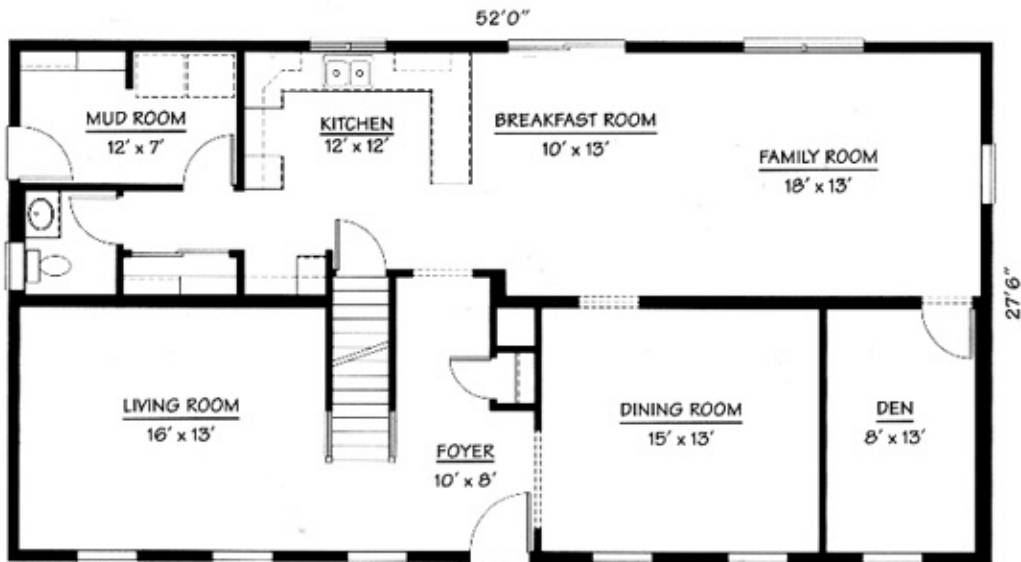
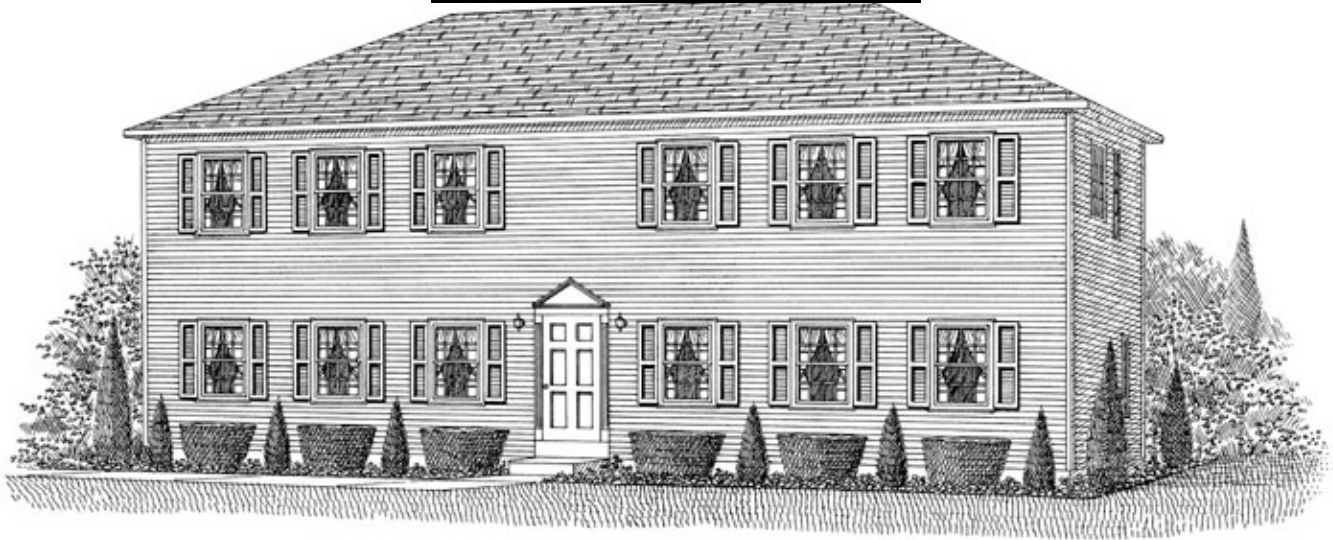


FIRST FLOOR



SECOND FLOOR

Georgian 2860 sq.ft.



FIRST FLOOR

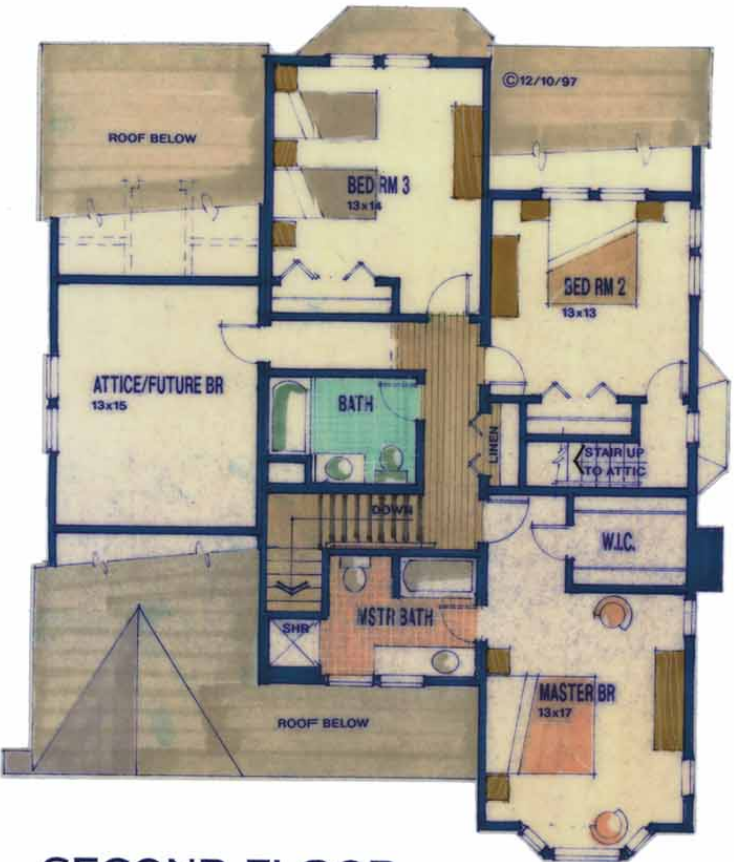


SECOND FLOOR



© 12/12/97

© 12/12/97



SECOND FLOOR



FIRST FLOOR

GLENCOVE
2,726 S.F.

370 Hope Street, Unit 2302, Stamford, CT 06906 USA
T:203.965.0084 F:815.346.1936 C:203.677.1187
E: CTModular@gmail.com

Greenwich 6044 sq.ft.



ConnecticutModularHomes.com



Knollwood 5884 sq.ft.



ConnecticutModularHomes.com



370 Hope Street, Unit 2302, Stamford, CT 06906 USA
T:203.965.0084 F:815.346.1936 C:203.677.1187
E: CTModular@gmail.com

Laurelcrest 4836 sq.ft.



ConnecticutModularHomes.com



First Floor



Second Floor

370 Hope Street, Unit 2302, Stamford, CT 06906 USA
T:203.965.0084 F:815.346.1936 C:203.677.1187
E: CTModular@gmail.com

Lincoln 2208 sq.ft.



FIRST FLOOR



SECOND FLOOR





© 11/19 DOUGLAS CUTLER ARCHITECT



© 11/19 DOUGLAS CUTLER ARCHITECT

SECOND FLOOR



© 11/19 DOUGLAS CUTLER ARCHITECT

FIRST FLOOR

QUEENSLAND

3,350 S.F.



© 2019 DOUGLAS CUTLER ARCHITECT



© 2019 DOUGLAS CUTLER ARCHITECT

SECOND FLOOR



© 2019 DOUGLAS CUTLER ARCHITECT

ROARING BROOK

FIRST FLOOR

3,350 S.F.

370 Hope Street, Unit 2302, Stamford, CT 06906 USA

T:203.965.0084 F:815.346.1936 C:203.677.1187

E: CTModular@gmail.com

Regatta 2722 sq.ft.



ConnecticutModularHomes.com





© 7/7/98 DOUGLAS CUTLER ARCHITECT



© 7/7/98 DOUGLAS CUTLER ARCHITECT



© 7/7/98 DOUGLAS CUTLER ARCHITECT

SECOND FLOOR



© 7/7/98 DOUGLAS CUTLER ARCHITECT

FIRST FLOOR

SHERBROOK

370 Hope Street, Unit 2302, Stamford, CT 06906 USA
 T: 203.965.0084 F: 815.346.1936 C: 203.677.1187
 E: CTModular@gmail.com

1972 S.F.



© 8/31/99 DOUGLAS CUTLER ARCHITECT

 **ConnecticutModularHomes.com**



SECOND FLOOR



© 8/31/99 DOUGLAS CUTLER ARCHITECT

FIRST FLOOR

WINSLOW
2,268 S.F.

370 Hope Street, Unit 2302, Stamford, CT 06906 USA
T:203.965.0084 F:815.346.1936 C:203.677.1187
E: CTModular@gmail.com



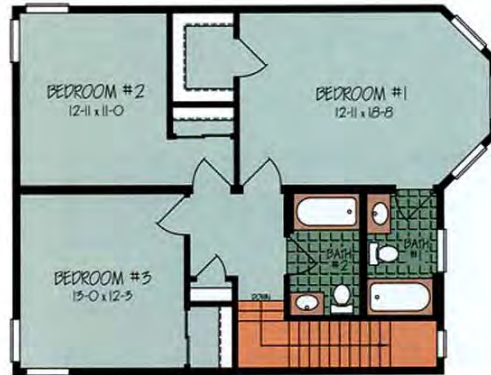
These plans are the property of GPG and its owners. Any reproduction or use in whole or part without the permission of GPG's written authorization is prohibited. Any persons or companies found using these plans or parts of them will be responsible to compensate GPG and its owners for their use and any legal expenses. For permission call GPG 203-667-1187



Floorplan: T276432BDA File: LIT-2Bridle
Two Story Bedrooms: 3 Baths: 3
Sqft 1st Floor: 27-6x44-0 2nd Floor 27-6x44-0



These plans are the property of GPG and it's owners. Any reproduction or use in whole or part without the permission of GPG's written authorization is prohibited. Any persons or companies found using these plans or parts of them will be responsible to comensate GPG and it's owners for their use and any legal expenses. For permission call GPG 203-667-1187



Floorplan: T276432BDA File: LIT-2Bridle
Two Story Bedrooms: 3 Baths: 3
Sqft 1st Floor: 27-6x44-0 2nd Floor 27-6x44-0



370 Hope Street
Unit 2302
Stamford, CT 06906
USA

Phone: 203.965.0084
Fax: 815.346.1936
C: 203.667.1187
E: CTmodular@gmail.com

Cape



Artist's rendering may differ from actual floor plans

Spacious and traditional, this cape is popular for its country look and comfortable layout. The island in the kitchen is an added joy.

The Charleston!



CHARLESTON-1 27-6 x 44-0



370 Hope Street
 Unit 2302
 Stamford, CT 06906
 USA

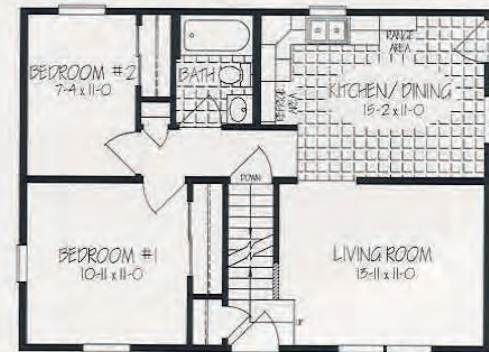
Phone: 203.965.0084
 Fax: 815.346.1936
 C: 203.667.1187
 E: CTmodular@gmail.com

Brewster I



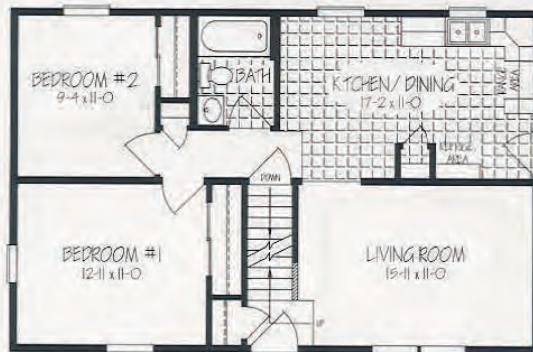
BREWSTER - I 23-6 x 42

Brewster II



BREWSTER - II 23-6 x 32-0

Brewster III



BREWSTER - III 23-6 x 36-0

Brewster IV



BREWSTER - IV 23-6 x 40-0



370 Hope Street
Unit 2302
Stamford, CT 06906
USA

Phone: 203.965.0084
Fax: 815.346.1936
C: 203.667.1187
E: CTmodular@gmail.com

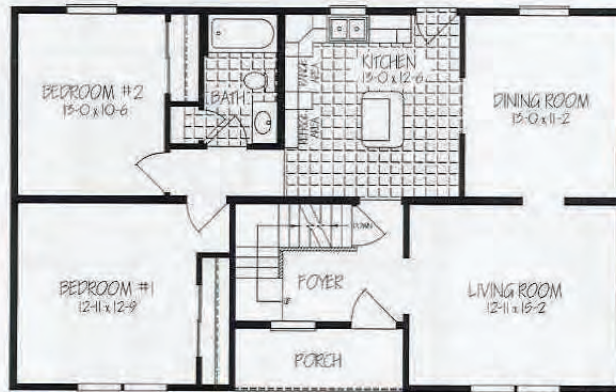
Cape



This Charleston II is a true delight! The island in the kitchen is perfect for entertaining and the porch is just the right size for relaxing.

Artist's rendering may differ from actual floor plans

The Charleston II



CHARLESTON - II 27'-6" x 44'-0"

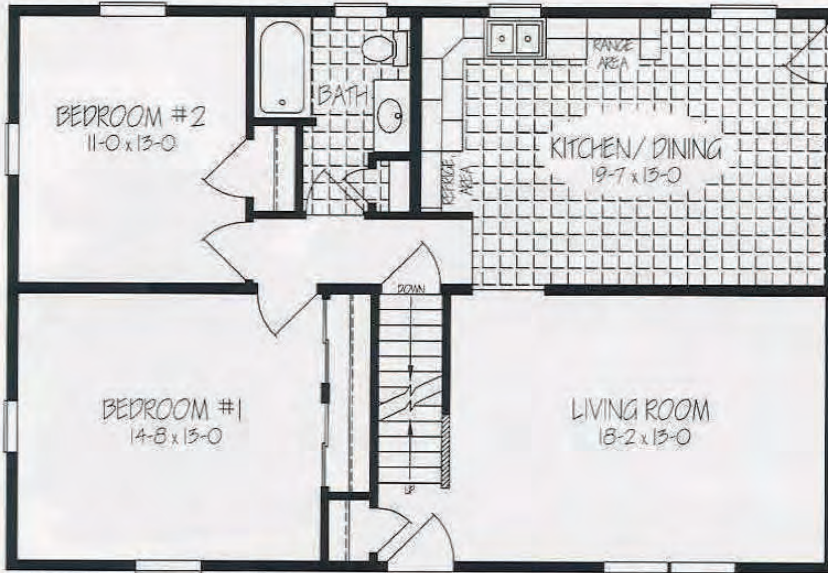




370 Hope Street
Unit 2302
Stamford, CT 06906
USA

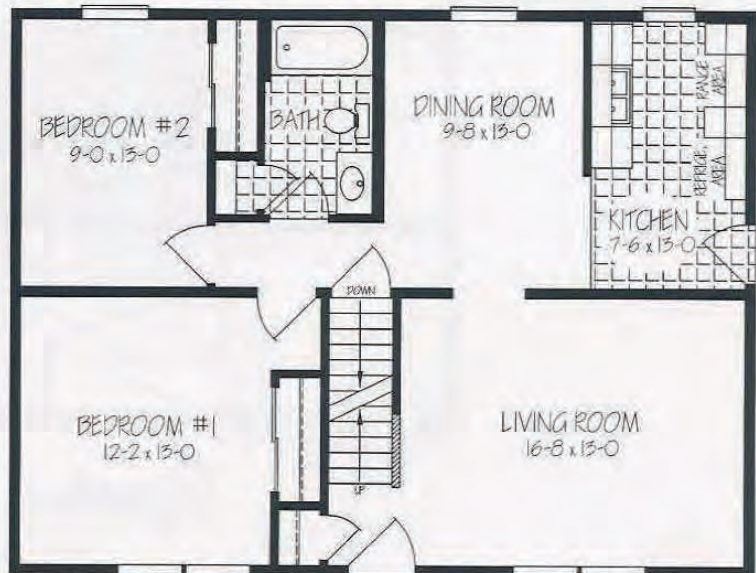
Phone: 203.965.0084
Fax: 815.346.1936
C: 203.667.1187
E: CTmodular@gmail.com

Bedford I



BEDFORD - I 27-6 x 40-0

Bedford II



BEDFORD - II 27-6 x 36-0





370 Hope Street
Unit 2302
Stamford, CT 06906
USA

Phone: 203.965.0084
Fax: 815.346.1936
C: 203.667.1187
E: CTmodular@gmail.com

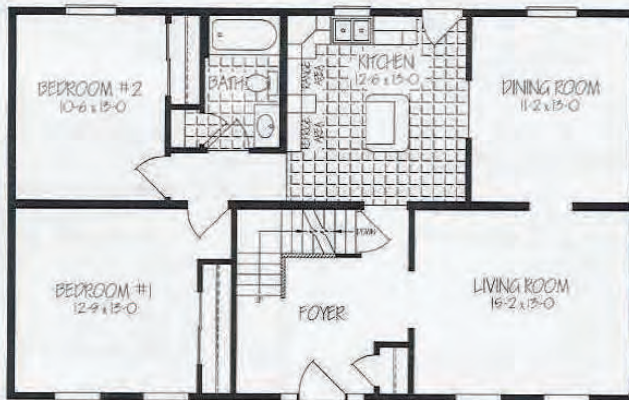
Cape



Artist's rendering may differ from actual floor plans

Spacious and traditional, this cape is popular for its country look and comfortable layout. The island in the kitchen is an added joy.

The Charleston!



CHARLESTON - 1 27-6 x 44-0



370 Hope Street
 Unit 2302
 Stamford, CT 06906
 USA

Phone: 203.965.0084
 Fax: 815.346.1936
 C: 203.667.1187
 E: CTmodular@gmail.com

Additional Ranch Plans

The Waymart I



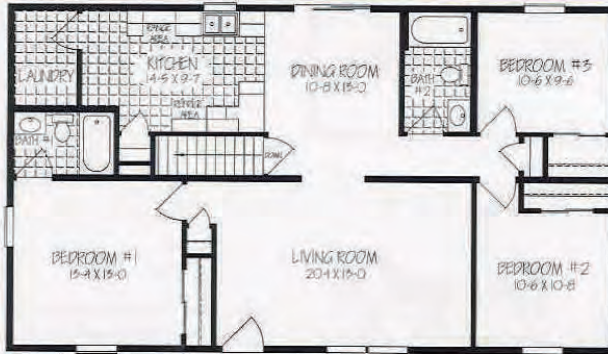
WAYMART - I 27-6 x 48

The Waymart II



WAYMART - II 27-6 x 40-0

The Waymart IV



WAYMART - IV 27-6 x 48-0

The Waymart V



WAYMART - V 27-6 x 40-0